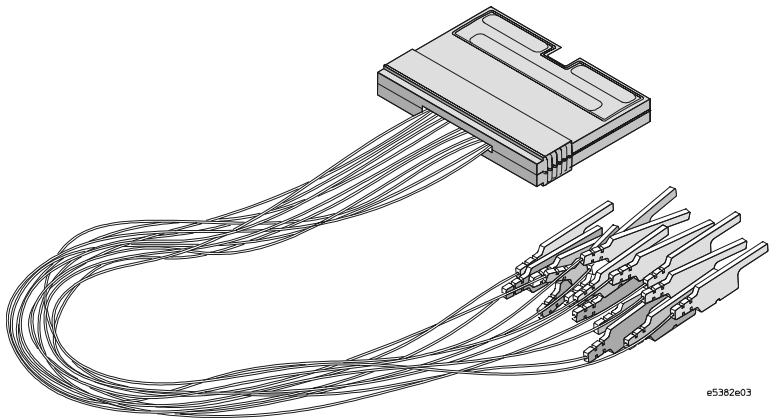


User's Guide

Publication number E5382-97000
April 2002



e5382e03

For Safety information and Regulatory information, see the pages at the back of this guide.

© Copyright Agilent Technologies 2002
All Rights Reserved.

E5382A Single-ended Flying Lead Probe Set

In This Book

This guide provides user and service information for the E5382A Single-ended Flying Lead Probe Set.

Chapter 1 gives you general information such as inspection, accessories supplied, and characteristics of the probe.

Chapter 2 shows you how to operate the probe and gives you information about some important aspects of probing and how to get the best results with your probe.

Contents

1 General Information

To inspect the probe	7
Accessories	8
Characteristics and Specifications	9
General Characteristics	10
To connect and set up the probe set	11

2 Operating the Probe

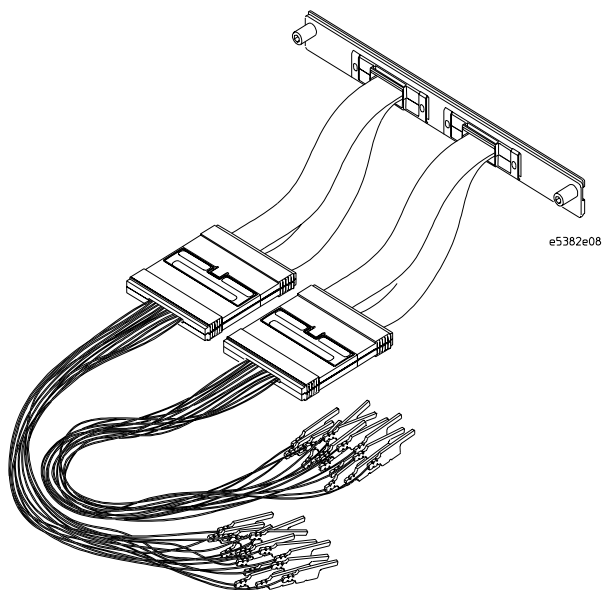
130 ohm Resistive Signal Pin (orange) and Solder-down Ground Lead	16
Input Impedance	17
Time domain transmission (TDT)	18
Step inputs	21
Eye opening	24
5 cm Resistive Signal Lead and Solder-down Ground Lead	27
Input Impedance	29
Time domain transmission (TDT)	30
Step input	33
Eye opening	36
Flying Lead and Ground Extender	39
Input Impedance	40
Time domain transmission (TDT)	41
Step input	44
Eye opening	47
Grabber Clip and Right-angle Ground Lead	50
Input Impedance	51
Time domain transmission (TDT)	52
Step input	55
Eye opening	58
Connecting to coaxial connectors	61

E5382A Single-ended Flying Lead Probe Set

The E5382A is a 17-channel single-ended flying lead probe set, compatible with the Agilent 16760A logic analysis module. The E5382A enables you to acquire signals from randomly located points in your target system.

Two E5382As are required to support all 34 channels on one 16760A.

A variety of accessories are supplied with the E5382A to allow you to access signals on various types of components on your PC board.



Single-ended flying lead probe set and Agilent 16760A logic analysis module.

To inspect the probe

❑ Inspect the shipping container for damage.

Keep a damaged shipping container or cushioning material until the contents of the shipment have been checked for completeness and the instrument has been checked mechanically and electrically.

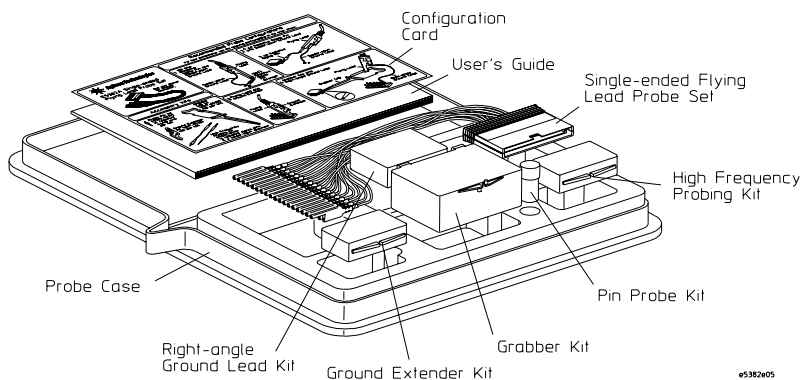
❑ Check the accessories.

Accessories supplied with the instrument are listed in "Accessories Supplied" in table later in this chapter.

- If the contents are incomplete or damaged notify your Agilent Technologies Sales Office.

❑ Inspect the probe.

- If there is mechanical damage or defect, or if the probe does not operate properly or pass performance tests, notify your Agilent Technologies Sales Office.
- If the shipping container is damaged, or the cushioning materials show signs of stress, notify the carrier as well as your Agilent Technologies Sales Office. Keep the shipping materials for the carrier's inspection. The Agilent Technologies Office will arrange for repair or replacement at Agilent Technologies' option without waiting for claim settlement.

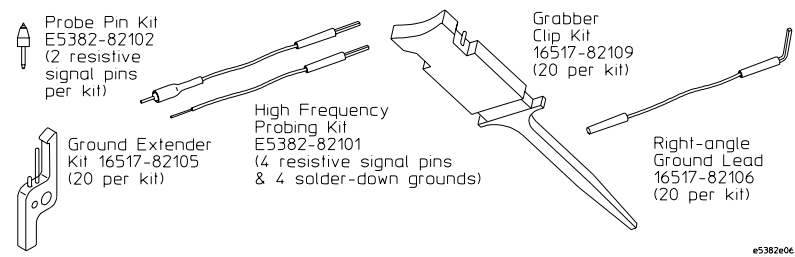


e5382e05

Probe case contents

Accessories

The following figure shows the accessories supplied with the E5382A Single-ended Flying Lead Probe Set.



Accessories supplied

The following table shows the part numbers for ordering replacement parts and additional accessories.

Replaceable Parts and Additional Accessories

Description	Qty	Agilent Part Number
Probe Pin Kit	4	16517-82107
High Frequency Probing Kit (4 resistive signal pins & 4 solder-down grounds)	8	16517-82104
Ground Extender	20	16517-82105
Grabber Clip Kit	20	16517-92109
Right-angle Ground Lead	20	16517-82106
Cable - Main	1	E5382-61601
Probe Tip to BNC Adapter	1	E9638A

Characteristics and Specifications

The following characteristics are typical for the probe set.

Characteristics

Input Resistance	20 k Ω
Input Capacitance	1.3 pF (accessory-specific, see accessories)
Maximum Recommended State Data Rate	1.5 Gb/s (accessory-specific, see accessories)
Minimum Data Voltage Swing	250 mV p-p
Minimum Diff. Clock Voltage Swing	100 mV p-p each side
Input Dynamic Range	-3 Vdc to +5 Vdc
Threshold Accuracy	$\pm(30 \text{ mV} + 1\% \text{ of setting})$
Threshold Range	-3.0 V to +5.0 V
Maximum Nondestructive Input Voltage	$\pm 40 \text{ Vdc}$, CAT 1 (mains isolated)
Maximum Input Slew Rate	5 V/ns
Clock Input	differential ⁽¹⁾
Number of Inputs ⁽²⁾	17 (1 clock and 16 data)

⁽¹⁾ refer to specifications on specific modes of operation for details on how inputs can be used

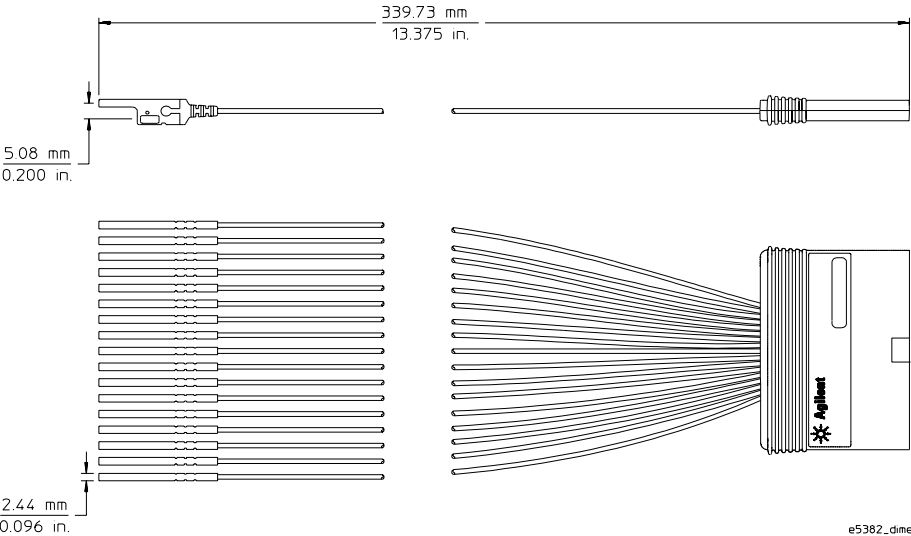
⁽²⁾ if using the clock as single-ended, the unused clock input must be grounded and the minimum voltage swing for single-ended clock operation is 250mV p-p

General Characteristics

The following general characteristics apply to the probe set.

Environmental Conditions

	Operating	Non-operating
Temperature	0 °C to +55 °C	−40 °C to +70 °C
Humidity	up to 95% relative humidity (non-condensing) at +40 °C	up to 90% relative humidity at +65 °C
Weight	approximately 0.69 kg	
Dimensions	Refer to the figure below.	
Pollution degree 2	Normally only non-conductive pollution occurs. Occasionally, however, a temporary conductivity caused by condensation must be expected.	
Indoor use		

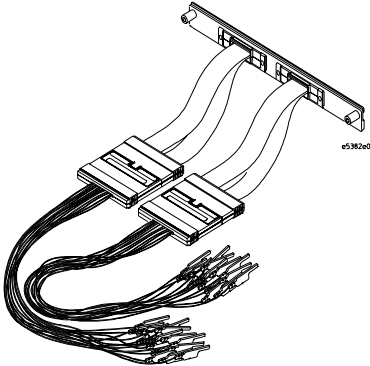


e5382_dimer

E5382A Single-ended Flying Lead Probe Set Dimensions

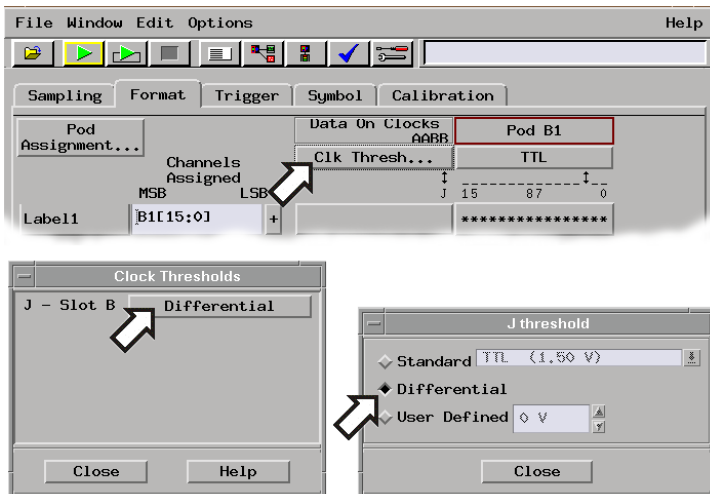
To connect and set up the probe set

- 1 Connect the single-ended probe to the Agilent 16760A logic analysis module.



Probe set connected to the analysis module

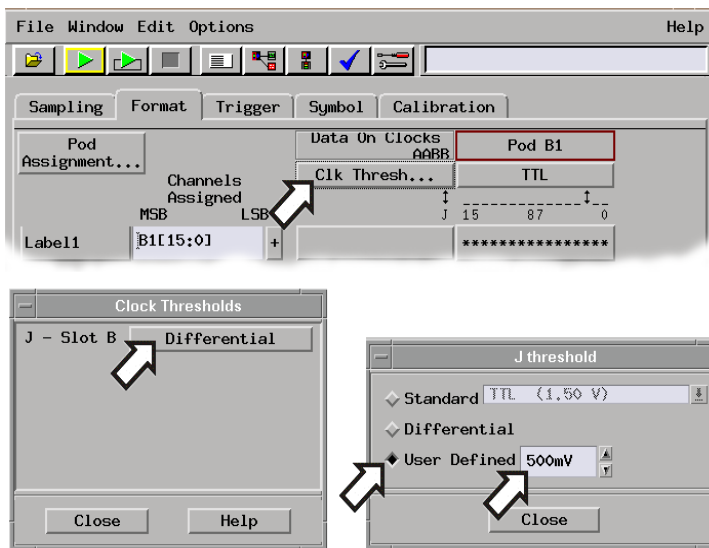
- 2 Set the clock input.
 - a If your clock signal is single-ended, simply use the positive Clock input. In the format screen in the 16760A, if you are using a differential clock, select differential clock threshold.



Differential threshold

To connect and set up the probe set

- b If your clock is not single-ended, set the threshold to the desired level.



User defined threshold

3 Connect the flying leads to your target system.

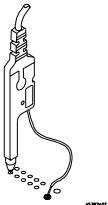
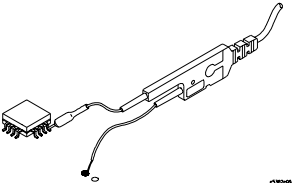
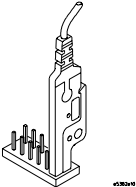
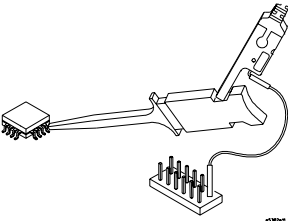
The next section in this manual shows the recommended probe configurations in the order of best performance. Select the configuration that works with your target system.

Introduction

The Agilent E5382A single-ended flying lead probe set comes with accessories that trade off flexibility, ease of use, and performance. Discussion and comparisons between four of the most common intended uses of the accessories are included in this section. The table on this page is an overview of the trade-offs between the various accessories. Each of the four configurations have been characterized for probe loading effects, probe step response, and maximum usable state speed. For more detailed information, refer to the pages indicated for each configuration.

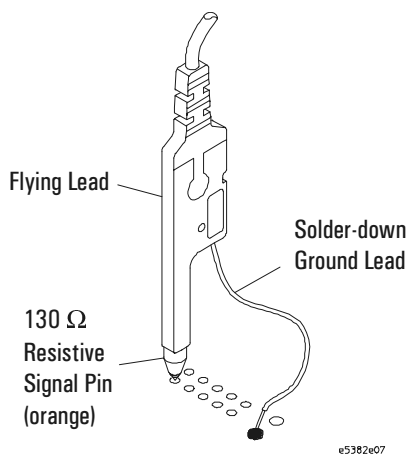
When simulating circuits that include a load model for the probe, a simplified model of the probe's input impedance can usually be used. The following table contains information for the simplified model of the probe using suggested accessory configurations. For more accurate load models and detailed discussion of each configuration's performance, refer to the pages indicated.

Suggested Configurations and Characteristics

Configuration	Description	Total lumped input C	Maximum recommended state speed	Details on page
	130 Ω Resistive Signal Pin (orange) and Solder-down Ground Lead	1.3 pF	1.5 Gb/s	page 16
	5 cm Resistive Signal Lead and Solder-down Ground Lead	1.5 pF	1.5 Gb/s	page 27
	Flying Lead and Ground Extender	1.6 pF	1.5 Gb/s	page 39
	Grabber Clip and Right-angle Ground Lead	2.0 pF	600 Mb/s	page 50

130 ohm Resistive Signal Pin (orange) and Solder-down Ground Lead

This configuration is recommended for hand-held probing of individual test points. Use the resistive signal pin for the signal. For the ground, the preferred method is to use the solder-down ground lead. Alternatively, for ground you could use the right-angle ground lead and a grabber clip as shown on page 50.

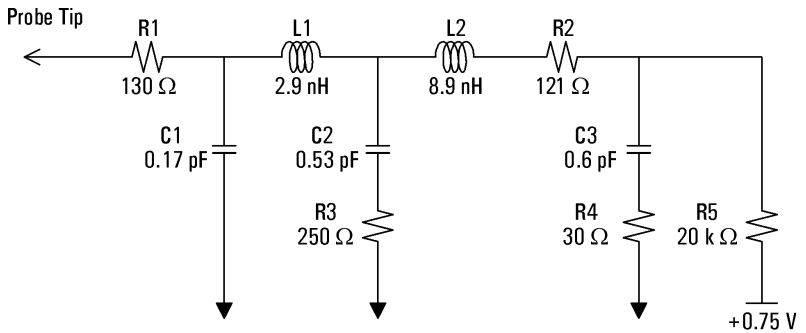


Hand-held probing configuration

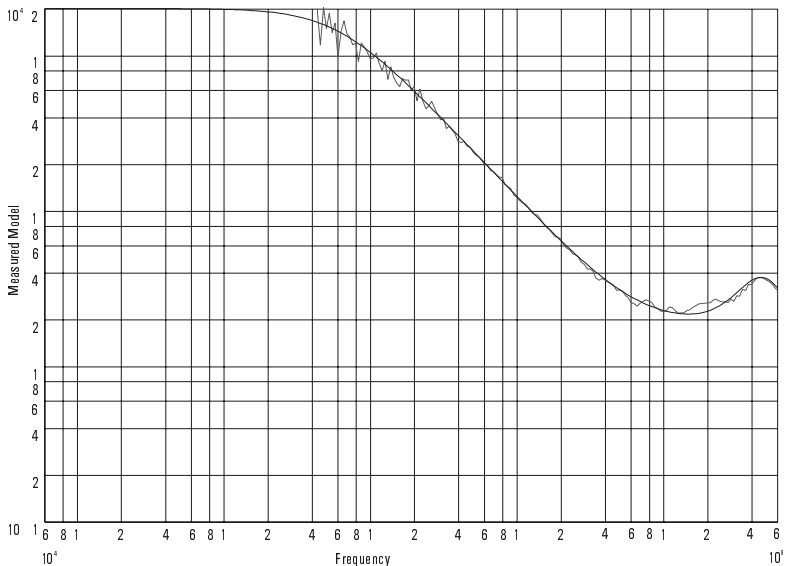
The 130 Ω resistive signal pin and solder-down ground leads are identical to the accessories for the Agilent 1156A/57A/58A series oscilloscope probes. They provide similar loading effects and characteristics. The accessories for the 1156A/57A/58A probes are compatible with the E5382A probes allowing you to interchange scope and logic analyzer leads.

Input Impedance

The E5382A probes have an input impedance which varies with frequency, and depends on which accessories are being used. The following schematic shows the circuit model for the input impedance of the probe when using the 130 Ω resistive signal pin (orange) and the solder-down ground wire. This model is a simplified equivalent load of the measured input impedance seen by the target.



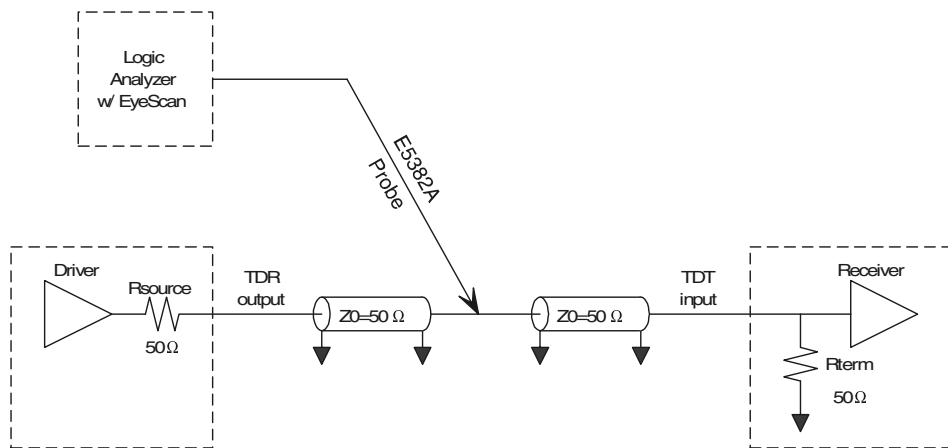
Equivalent load model



Measured versus modeled input impedance

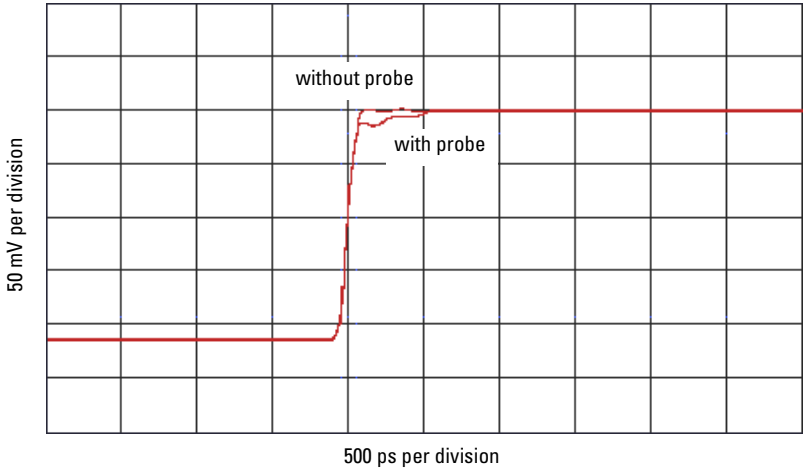
Time domain transmission (TDT)

All probes have a loading effect on the circuit when they come in contact with the circuit. Time domain transmission (TDT) measurements are useful for understanding the probe loading effects as seen at the target receiver. The following TDT measurements were made mid-bus on a $50\ \Omega$ transmission line load terminated at the receiver. These measurements show how the $130\ \Omega$ resistive signal pin (orange) and solder-down ground lead configuration affect the step seen by the receiver for various rise times.

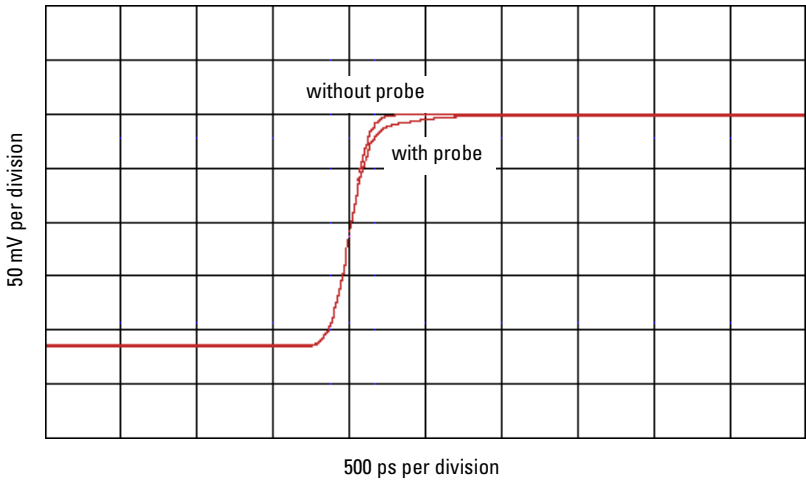
**TDT measurement schematic**

As the following graphs demonstrate, the $130\ \Omega$ resistive signal pin and solder-down ground lead configuration is the least intrusive of the four recommended configurations. The graphs show that the loading effects are virtually invisible for targets with rise times ≥ 500 ps, negligible for targets with 250 ps rise times, and probably still acceptable for 100 ps rise times. Ultimately, you must determine what is an acceptable amount of distortion of the target signal.

Operating the Probe
130 ohm Resistive Signal Pin (orange) and Solder-down Ground Lead

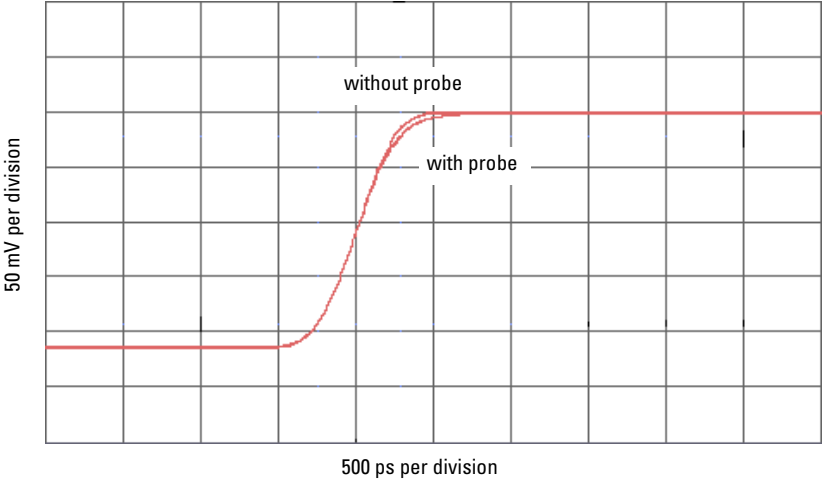


TDT measurement at receiver with and without probe load for 100 ps rise time

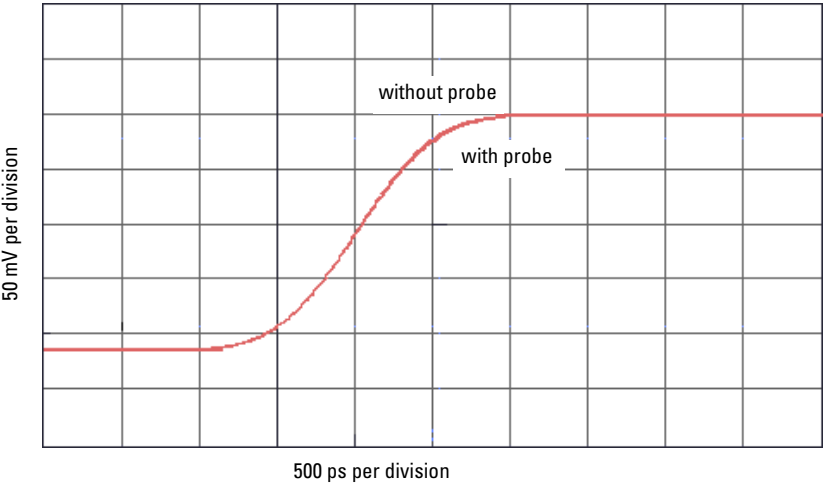


TDT measurement at receiver with and without probe load for 250 ps rise time

Operating the Probe
130 ohm Resistive Signal Pin (orange) and Solder-down Ground Lead



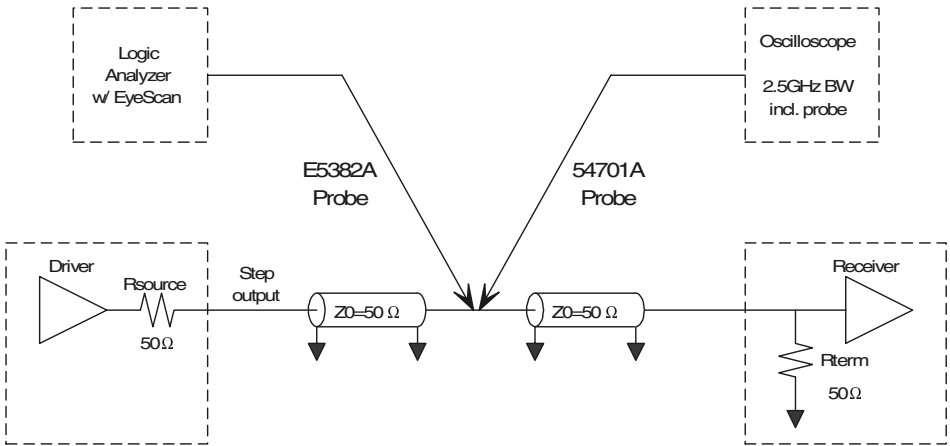
TDT measurement at receiver with and without probe load for 500 ps rise time



TDT measurement at receiver with and without probe load for 1 ns rise time

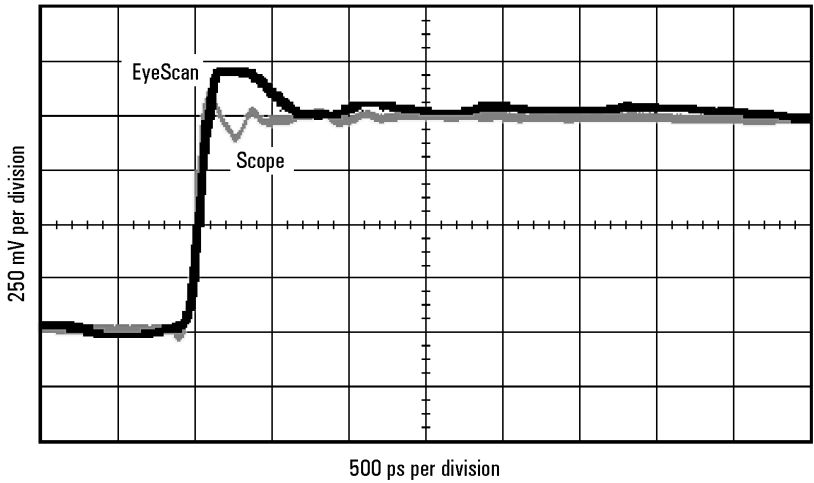
Step inputs

Maintaining signal fidelity to the logic analyzer is critical if the analyzer is to accurately capture data. One measure of a system's signal fidelity is to compare V_{in} to V_{out} for various step inputs. For the following graphs, V_{in} is the signal at the logic analyzer probe tip measured by double probing with an Agilent 54701A probe into an Agilent 54750A oscilloscope (total 2.5 GHz BW). Eye Scan is used to measure V_{out} , the signal seen by the logic analyzer. The measurements were made on a mid-bus connection to a $50\ \Omega$ transmission line load terminated at the receiver. These measurements show the logic analyzer's response while using the $130\ \Omega$ resistive signal pin (orange) and solder-down ground lead configuration.

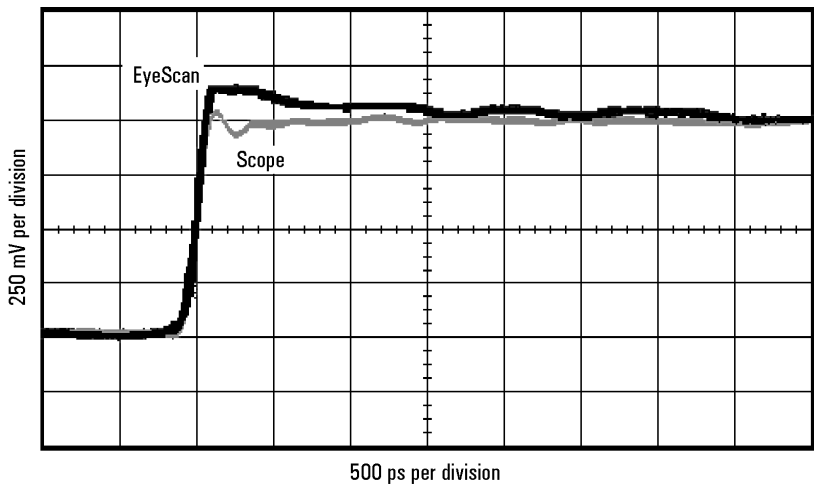


Step input measurement schematic

The following graphs demonstrate the logic analyzer's probe response to different rise times. These graphs are included for you to gain insight into the expected performance of the different recommended configurations.

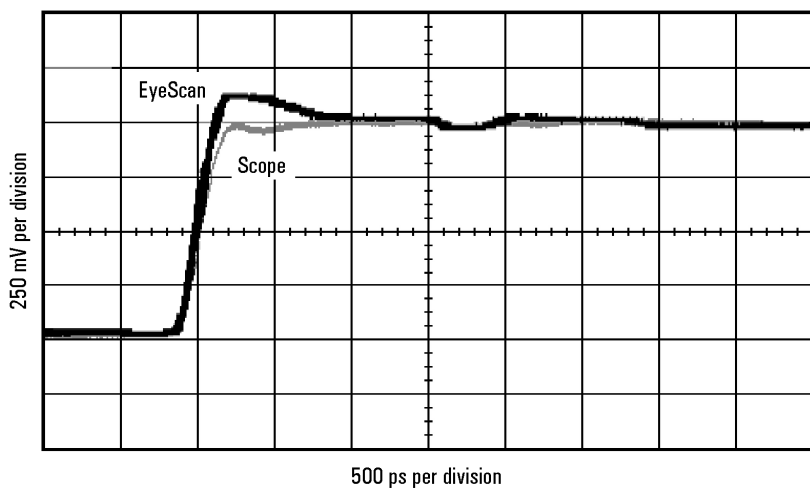


Logic analyzer's response to a 100 ps rise time

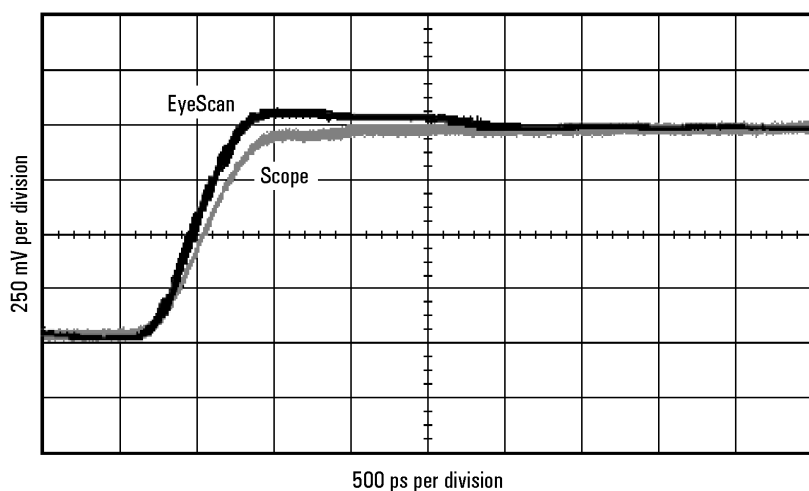


Logic analyzer's response to a 250 ps rise time

Note: These measurements are not the true step response of the probes. The true step response of a probe is the output of the probe while the input is a perfect step.



Logic analyzer's response to a 500 ps rise time

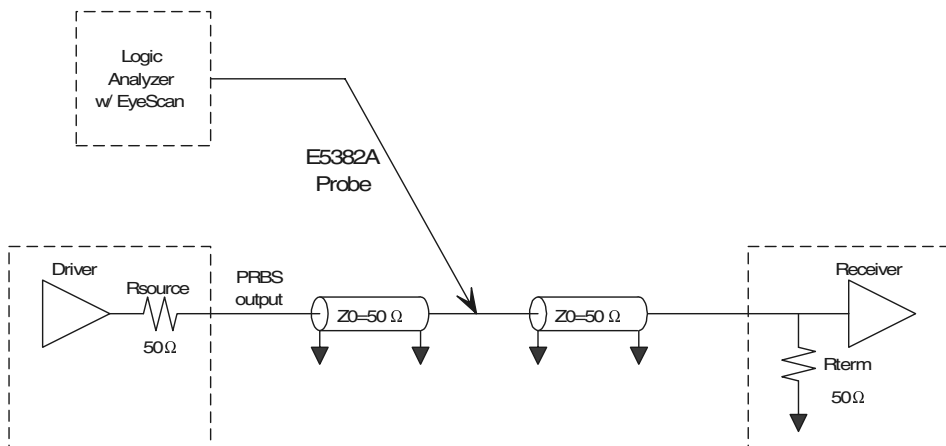


Logic analyzer's response to a 1 ns rise time

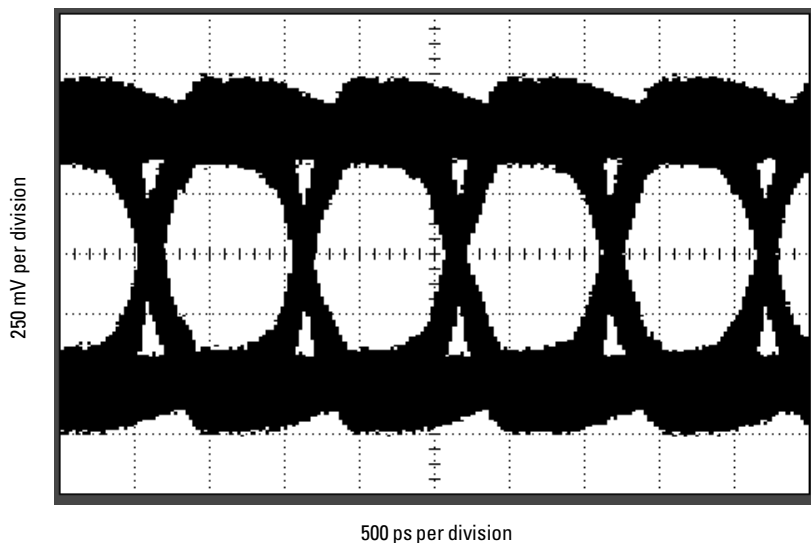
Note: These measurements are not the true step response of the probes. The true step response of a probe is the output of the probe while the input is a perfect step.

Eye opening

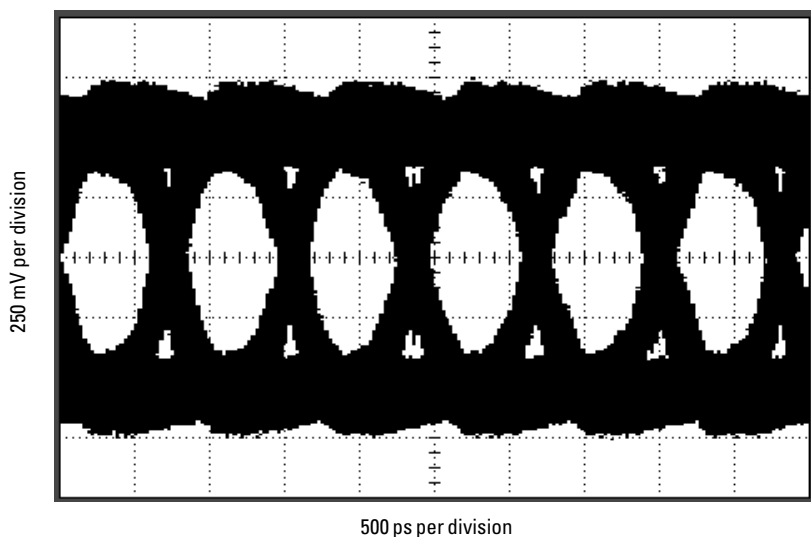
The eye opening at the logic analyzer is the truest measure of an analyzer's ability to accurately capture data. Seeing the eye opening at the logic analyzer is possible with Eye Scan. Eye opening helps you know how much margin the logic analyzer has, where to sample and at what threshold. Any probe response that exhibits overshoot and ringing, probe non-flatness, noise and other issues all deteriorate the eye opening seen by the logic analyzer. The following eye diagrams were measured using Eye Scan probed mid-bus on a $50\ \Omega$ transmission line load terminated at the receiver. The data patterns were generated using a $2^{23}-1$ pseudo random bit sequence (PRBS). These measurements show the remaining eye opening at the logic analyzer while using the $130\ \Omega$ resistive signal pin (orange) and solder-down ground lead configuration.

**Eye opening measurement schematic**

The logic analyzer Eye Scan measurement uses the same circuitry as the synchronous state mode analysis. Therefore, the eye openings measured are exact representations of what the logic analyzer sees and operates on in state mode. The following measurements demonstrate how the eye opening starts to collapse as the clock rate is increased. At 1500 Mb/s, the eye opening is noticeably deteriorating as jitter on the transitions increase and voltage margins decrease. As demonstrated by the last eye diagram, the $130\ \Omega$ resistive signal pin and solder-down ground lead configuration still has a usable eye opening at 1500 Mb/s and minimum signal swing.

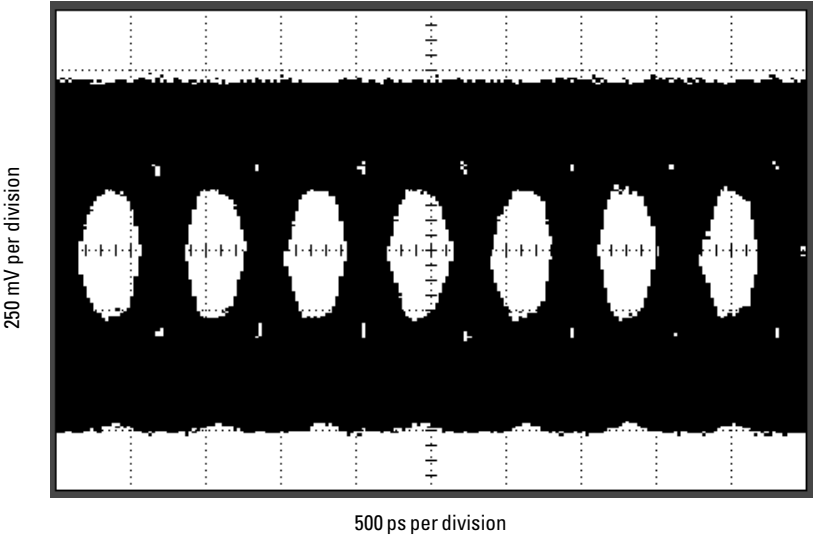


Logic analyzer eye opening for a PRBS signal of 1 V p-p, 1000 Mb/s data rate

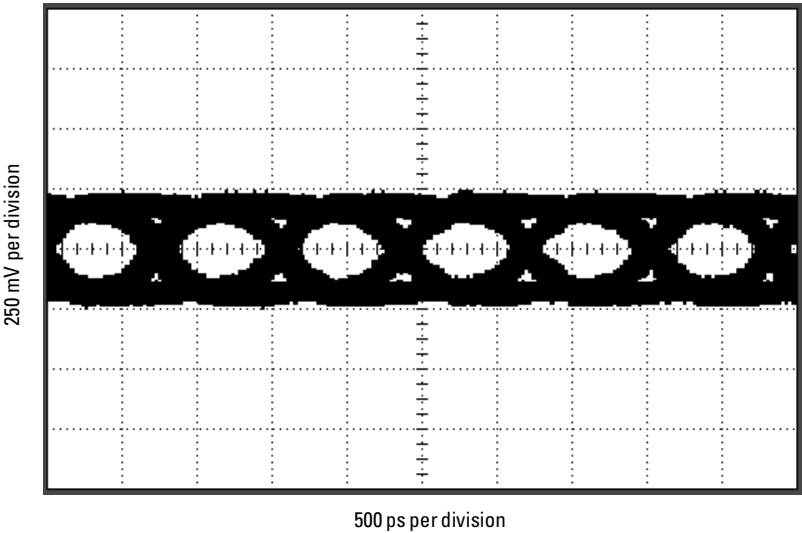


Logic analyzer eye opening for a PRBS signal of 1 V p-p, 1250 Mb/s data rate

Operating the Probe
130 ohm Resistive Signal Pin (orange) and Solder-down Ground Lead



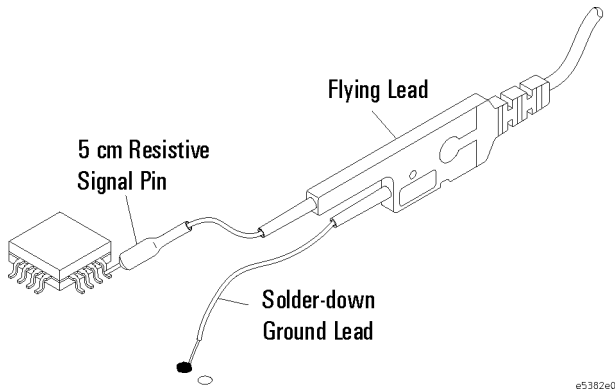
Logic analyzer eye opening for a PRBS signal of 1 V p-p, 1500 Mb/s data rate



Logic analyzer eye opening for a PRBS signal of 250 mV, 1250 Mb/s data rate

5 cm Resistive Signal Lead and Solder-down Ground Lead

This configuration is recommended for accessing components such as IC leads or surface-mount component leads for hands-off probing.



Surface-mount probe configuration

CAUTION: The resistor bends easily. A bent resistor could affect the performance of the 5 cm resistive signal lead.

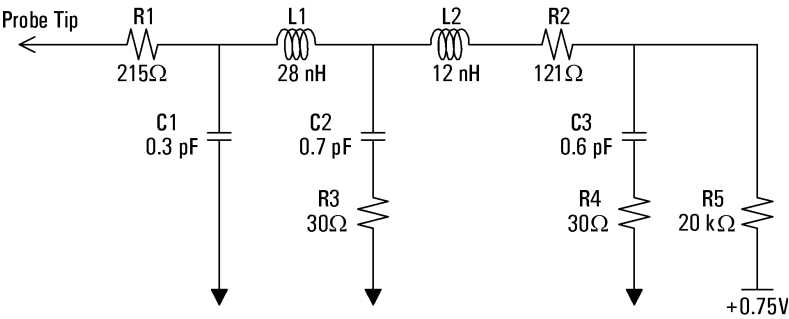
The 5cm resistive signal lead and the solder-down ground leads are identical to the accessories for the Agilent 1156A/57A/58A oscilloscope probes. They provide similar loading effects and characteristics. The accessories for the 1156A/57A/58A oscilloscope probes are compatible with the E5382A probes, allowing you to interchange scope and logic analyzer leads.

Operating the Probe

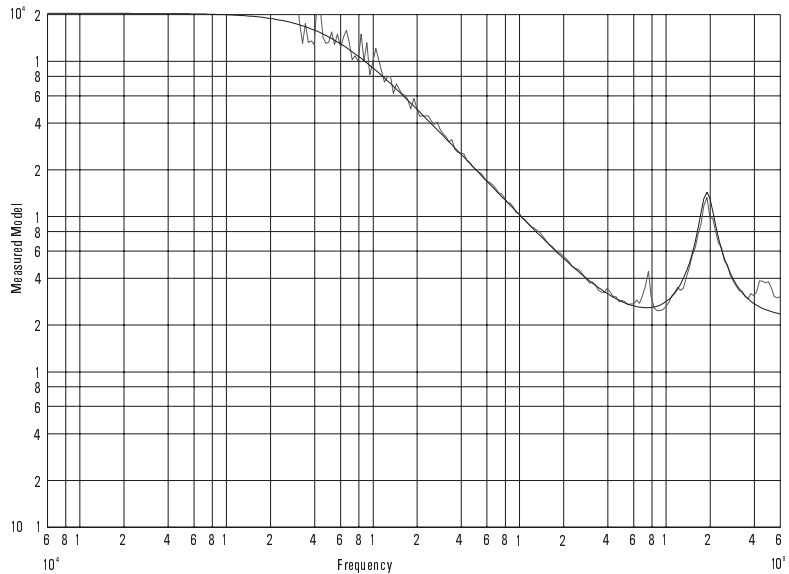
5 cm Resistive Signal Lead and Solder-down Ground Lead

Input Impedance

The E5382A probes have an input impedance which varies with frequency, and depends on which accessories are being used. The following schematic shows the circuit model for the input impedance of the probe when using the SMT solder-down Signal (red) and Ground (black) wires. This model is a simplified equivalent load of the measured input impedance seen by the target.



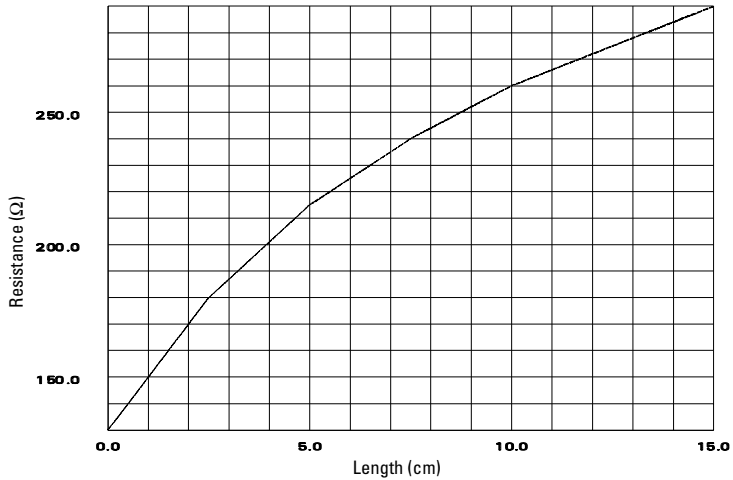
Equivalent load model



Measured versus modeled input impedance

Other signal lead lengths may be used with these probes but a resistance value needs to be determined from the following figure and a resistor of that value needs to be placed as close as possible to the point being probed.

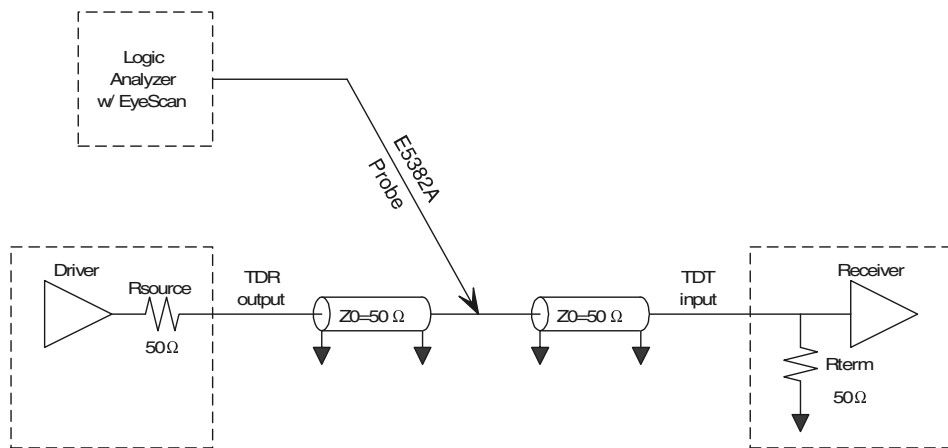
Optimum Damping Resistor Value Versus Signal Lead Length



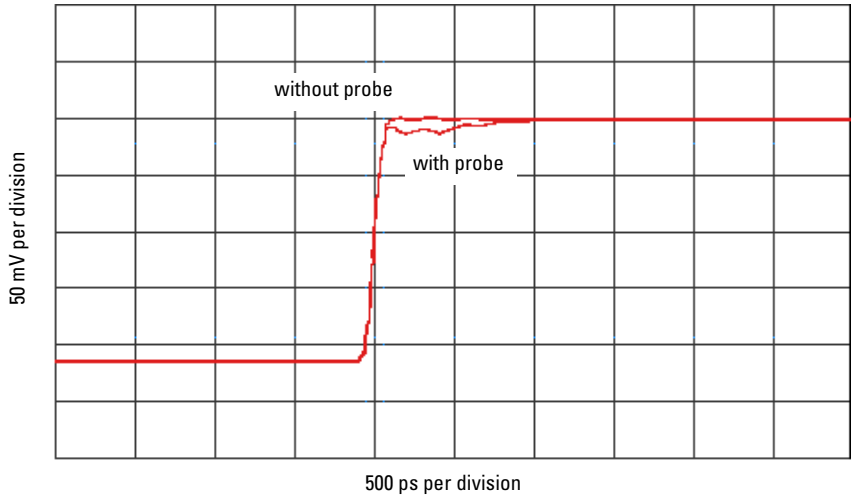
If a resistor is not used, the response of the probe will be very peaked at high frequencies. This will cause overshoot and ringing to be introduced in the step response of waveforms with fast rise times. Use of this probe without a resistor at the point being probed should be limited to measuring only waveforms with slower rise times.

Time domain transmission (TDT)

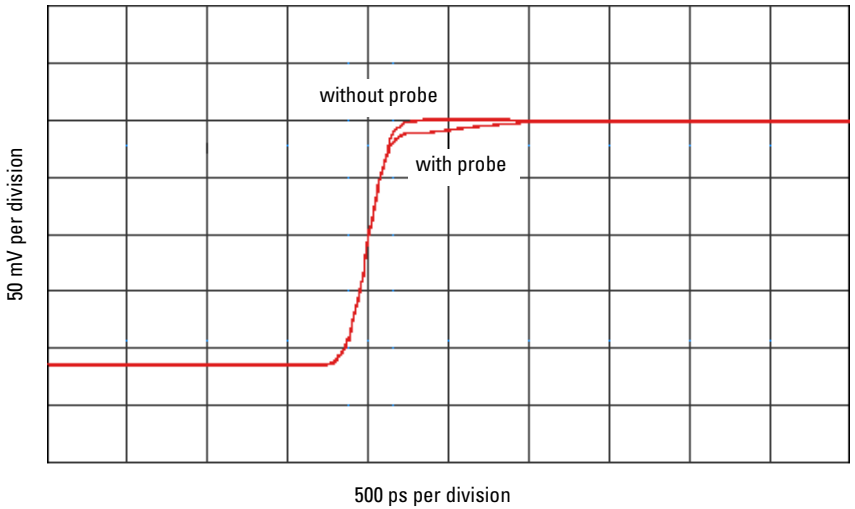
All probes have a loading effect on the circuit when they come in contact with the circuit. Time domain transmission (TDT) measurements are useful for understanding the probe loading effects as seen at the target receiver. The following TDT measurements were made mid-bus on a $50\ \Omega$ transmission line load terminated at the receiver. These measurements show how the 5 cm resistive signal lead and solder-down ground lead configuration affect the step seen by the receiver for various rise times.

**TDT measurement schematic**

The recommended configurations are listed in order of loading on the target. As the following graphs demonstrate, the 5 cm resistive signal lead and solder-down ground lead configuration has the 2nd best loading of the four recommended configurations. The graphs show that the loading effects are virtually invisible for targets with rise times ≥ 500 ps, negligible for targets with 250 ps rise times, and probably still acceptable for 100 ps rise times. Ultimately, you must determine what is an acceptable amount of distortion of the target signal.

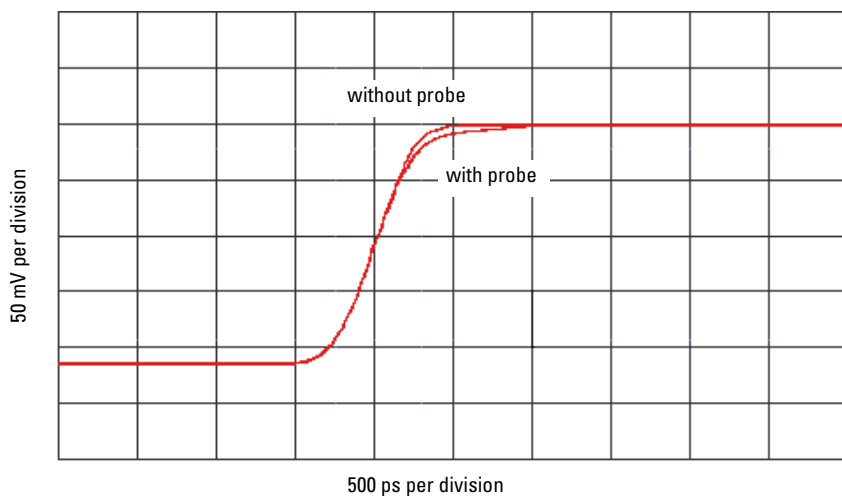


TDT measurement at receiver with and without probe load for 100 ps rise time

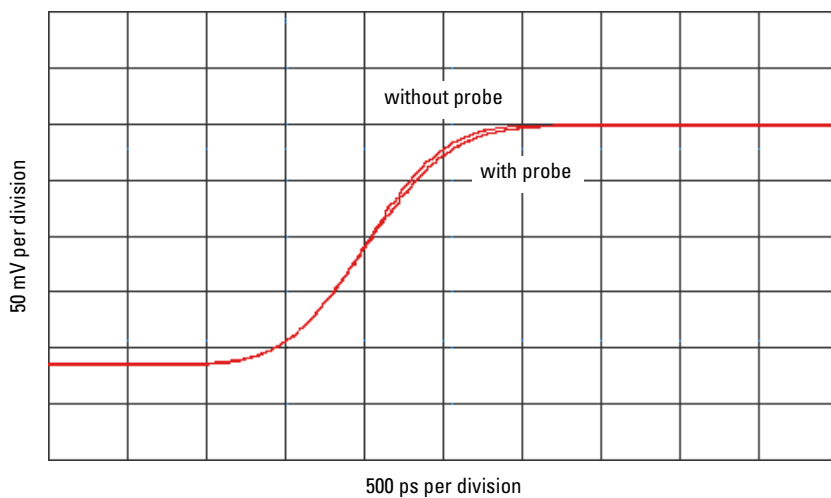


TDT measurement at receiver with and without probe load for 250 ps rise time

5 cm Resistive Signal Lead and Solder-down Ground Lead



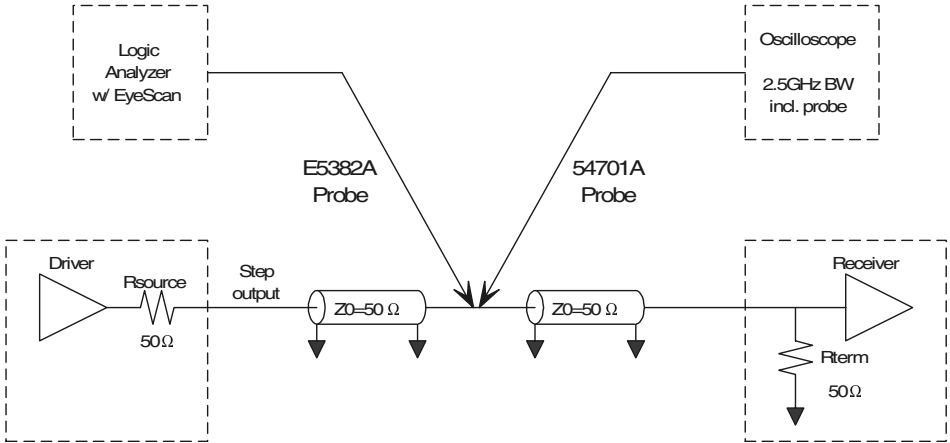
TDT measurement at receiver with and without probe load for 500 ps rise time



TDT measurement at receiver with and without probe load for 1 ns rise time

Step input

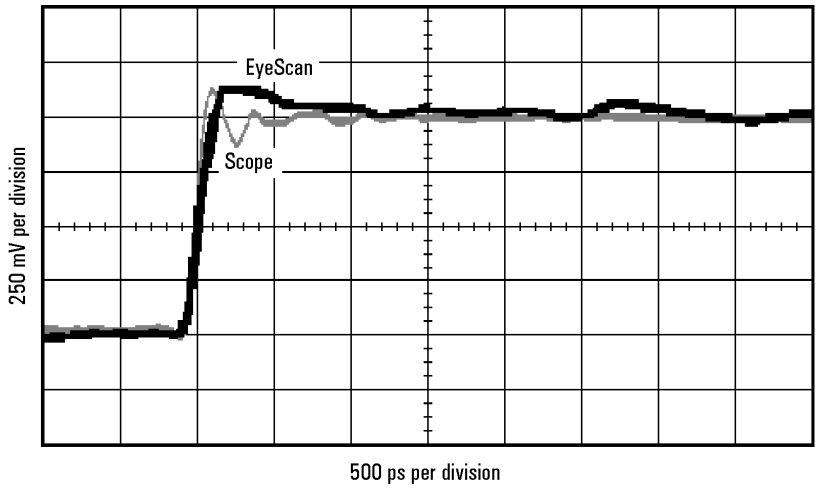
Maintaining signal fidelity to the logic analyzer is critical if the analyzer is to accurately capture data. One measure of a system's signal fidelity is to compare V_{in} to V_{out} for various step inputs. For the following graphs, V_{in} is the signal at the logic analyzer probe tip measured by double probing with an Agilent 54701A probe into an Agilent 54750A oscilloscope (total 2.5 GHz BW). Eye Scan is used to measure V_{out} , the signal seen by the logic analyzer. The measurements were made on a mid-bus connection to a $50\ \Omega$ transmission line load terminated at the receiver. These measurements show the logic analyzer's response while using the 5 cm resistive signal lead and solder-down ground lead configuration.



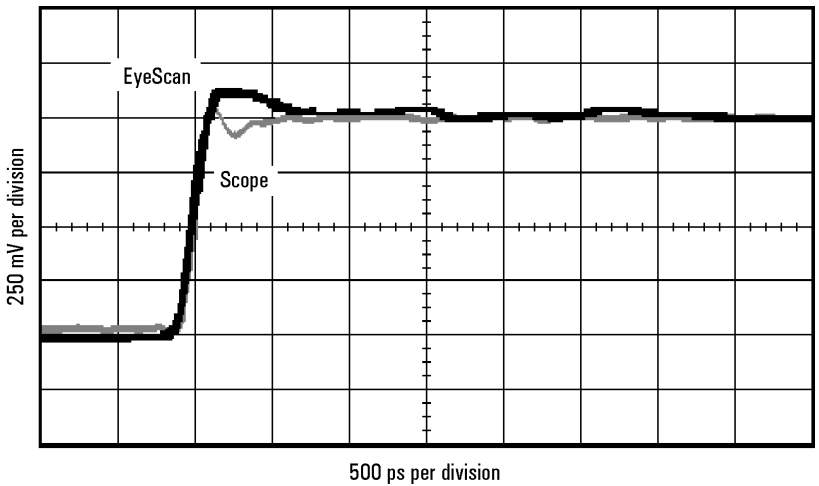
Step input measurement schematic

The following graphs demonstrate the logic analyzer's probe response to different rise times. These graphs are included for you to gain insight into the expected performance of the different recommended configurations.

5 cm Resistive Signal Lead and Solder-down Ground Lead

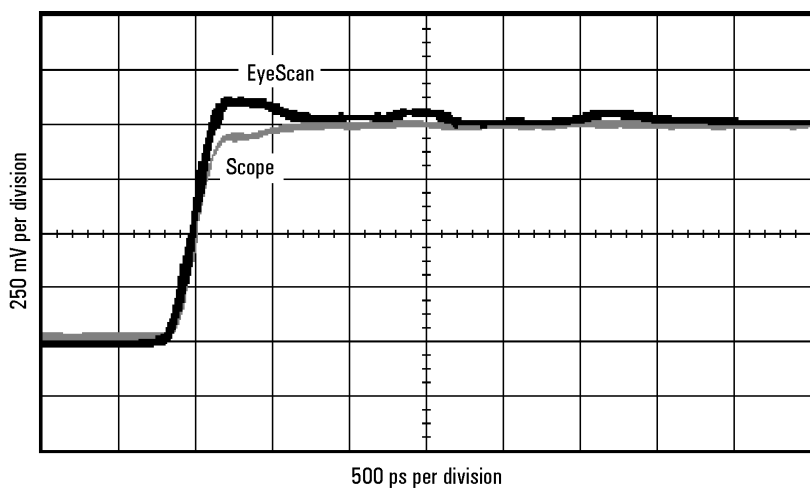


Logic analyzer's response to a 100 ps rise time

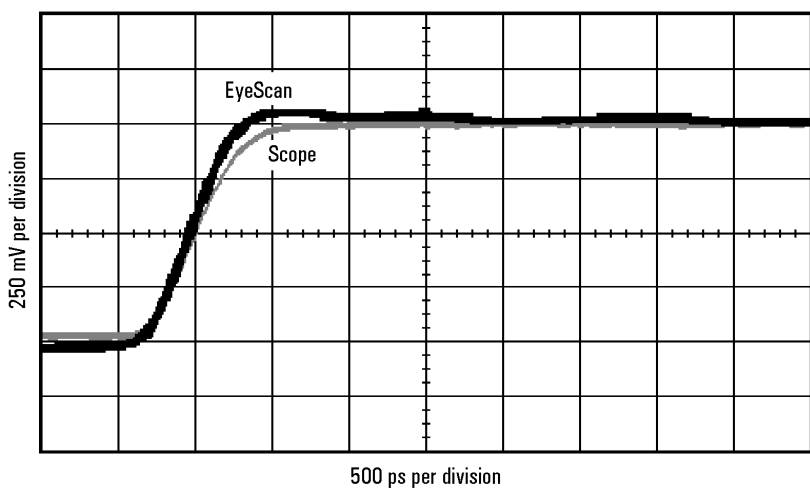


Logic analyzer's response to a 250 ps rise time

Note: These measurements are not the true step response of the probes. The true step response of a probe is the output of the probe while the input is a perfect step.



Logic analyzer's response to a 500 ps rise time

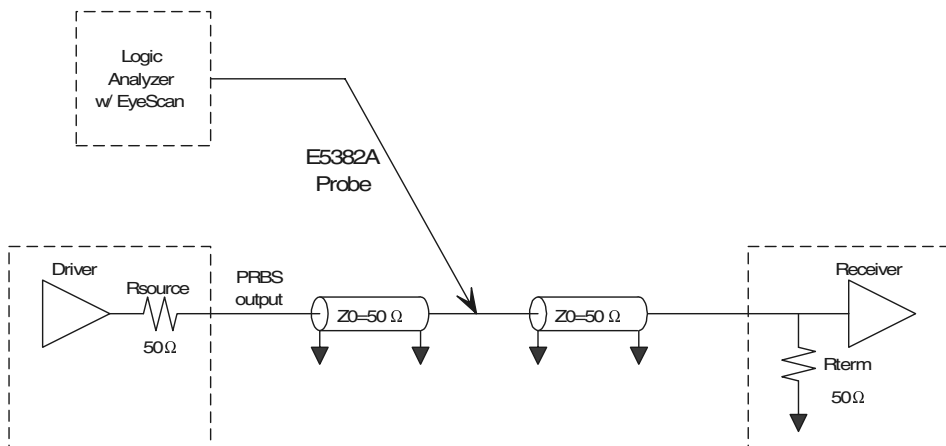


Logic analyzer's response to a 1 ns rise time

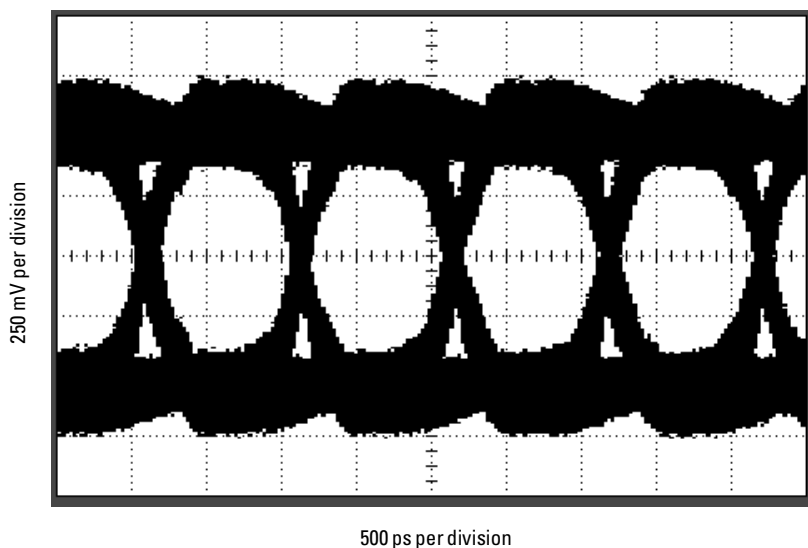
Note: These measurements are not the true step response of the probes. The true step response of a probe is the output of the probe while the input is a perfect step.

Eye opening

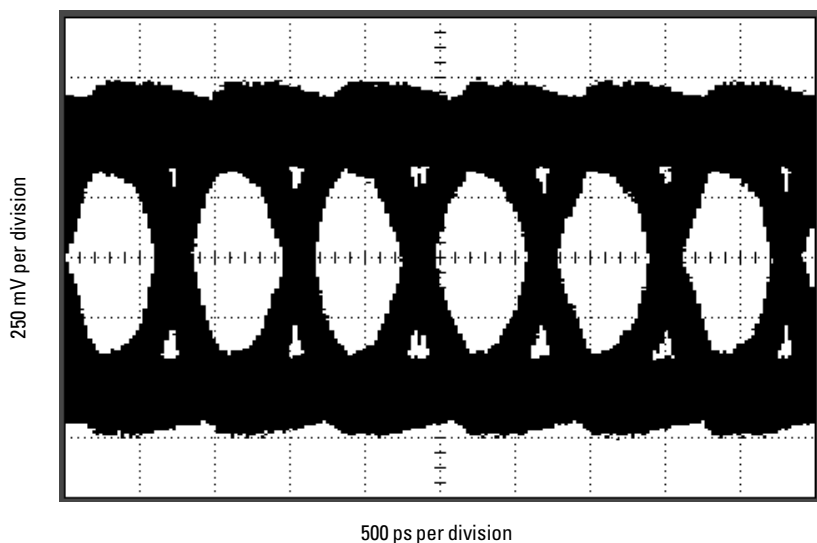
The eye opening at the logic analyzer is the truest measure of an analyzer's ability to accurately capture data. Seeing the eye opening at the logic analyzer is possible with Eye Scan. Eye opening helps you know how much margin the logic analyzer has, where to sample and at what threshold. Any probe response that exhibits overshoot and ringing, probe non-flatness, noise and other issues all deteriorate the eye opening seen by the logic analyzer. The following eye diagrams were measured using Eye Scan probed mid-bus on a 50 Ω transmission line load terminated at the receiver. The data patterns were generated using a $2^{23}-1$ pseudo random bit sequence (PRBS). These measurements show the remaining eye opening at the logic analyzer while using the 5cm resistive signal lead and solder-down ground lead configuration.

**Eye opening measurement schematic**

The logic analyzer Eye Scan measurement uses the same circuitry as the synchronous state mode analysis. Therefore, the eye openings measured are exact representations of what the logic analyzer sees and operates on in state mode. The following measurements demonstrate how the eye opening starts to collapse as the clock rate is increased. At 1500 Mb/s, the eye opening is noticeably deteriorating as jitter on the transitions increase and voltage margins decrease. The bandwidth limiting of the 5 cm resistive signal lead causes more roll-off on the transitions. As demonstrated by the last eye diagram, the 5 cm resistive signal lead and solder-down ground lead configuration still has a usable eye opening at 1250Mb/s and minimum signal swing.

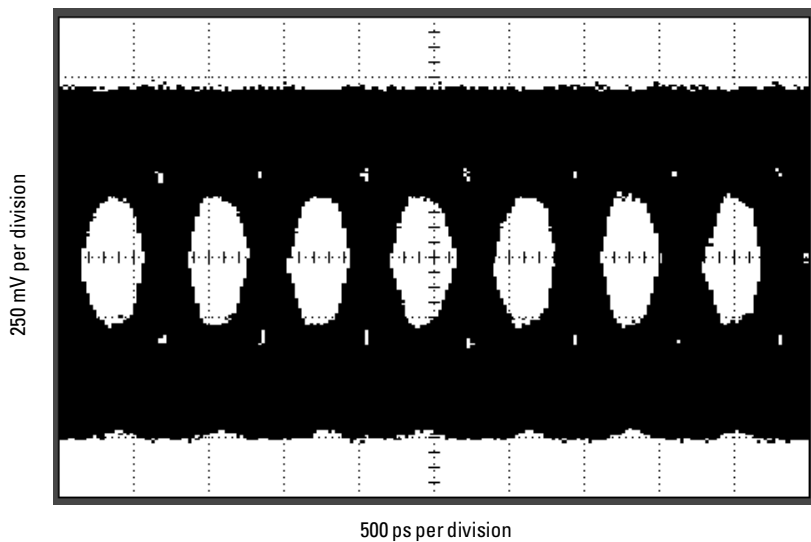


Logic analyzer eye opening for a PRBS signal of 1 V p-p, 100 Mb/s data rate

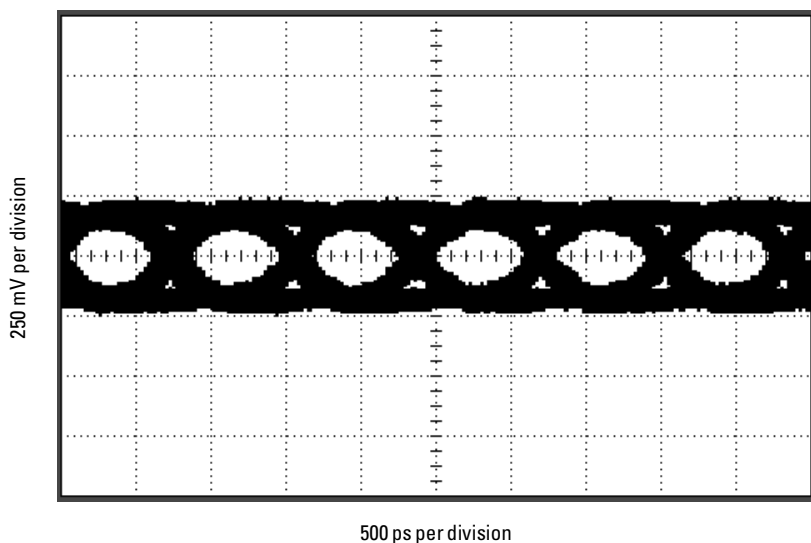


Logic analyzer eye opening for a PRBS signal of 1 V p-p, 1250 Mb/s data rate

5 cm Resistive Signal Lead and Solder-down Ground Lead



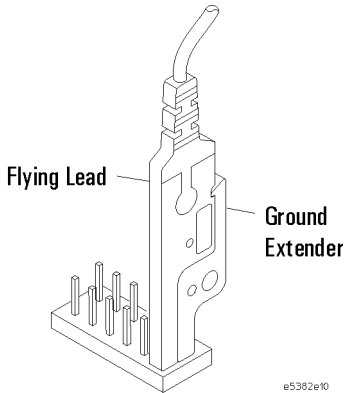
Logic analyzer eye opening for a PRBS signal of 1 V p-p, 1500 Mb/s data rate



Logic analyzer eye opening for a PRBS signal of 250 mV p-p, 1250 Mb/s data rate

Flying Lead and Ground Extender

This configuration is recommended when you can provide 0.25-cm square or round pins on 0.1 inch centers as test points where you wish to connect the probe. Alternately, you may substitute soldered-down wires of similar length (up to 1 cm in length) and expect to achieve similar results.



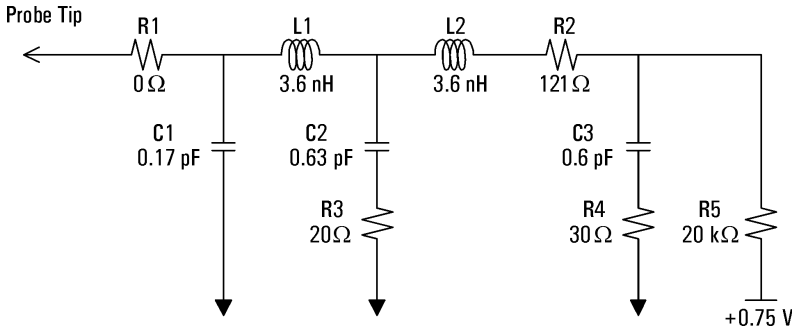
Pin probing configuration

All of the measurements for the flying lead and ground extender configuration were made with standard surface-mount pins on 0.1-inch centers soldered to the test fixture. The input impedance, TDT response, step response, and eye opening measurements all include the combined load of the probe configuration and the surface-mount pins on the target.

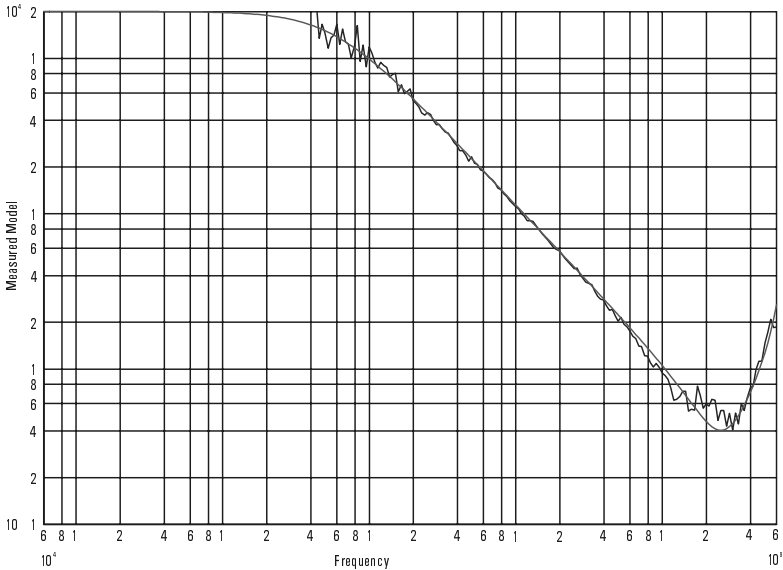
Operating the Probe
Flying Lead and Ground Extender

Input Impedance

The E5382A probes have an input impedance which varies with frequency, and depends on which accessories are being used. The following schematic shows the circuit model for the input impedance of the probe when using the ground extender clip. This model is a simplified equivalent load of the measured input impedance seen by the target.



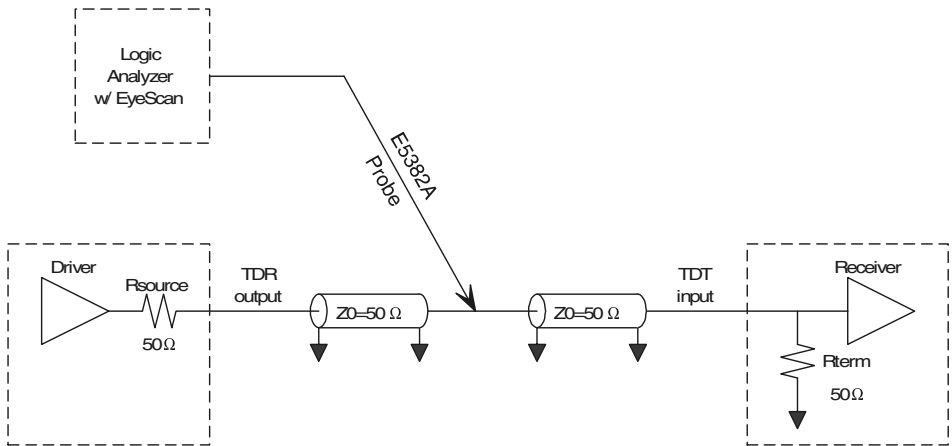
Equivalent load model



Measured versus modeled input impedance

Time domain transmission (TDT)

All probes have a loading effect on the circuit when they come in contact with the circuit. Time domain transmission (TDT) measurements are useful for understanding the probe loading effects as seen at the target receiver. The following TDT measurements were made mid-bus on a $50\ \Omega$ transmission line load terminated at the receiver. These measurements show how the flying lead and ground extender configuration affect the step seen by the receiver for various rise times.

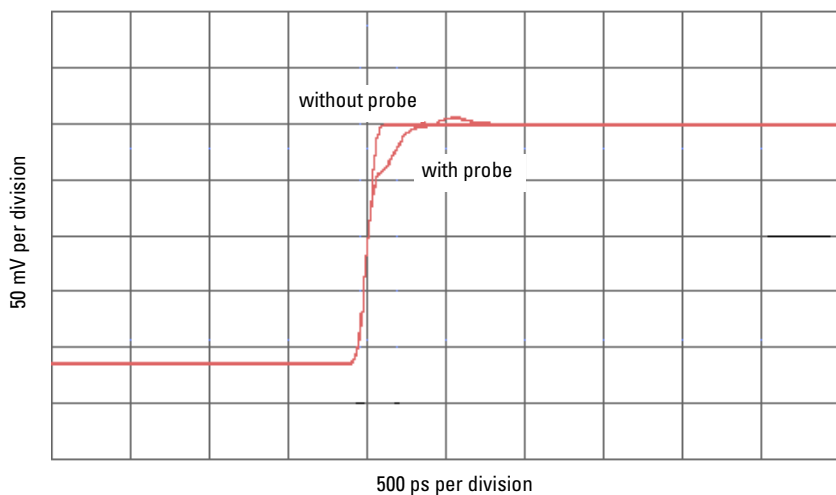


TDT measurement schematic

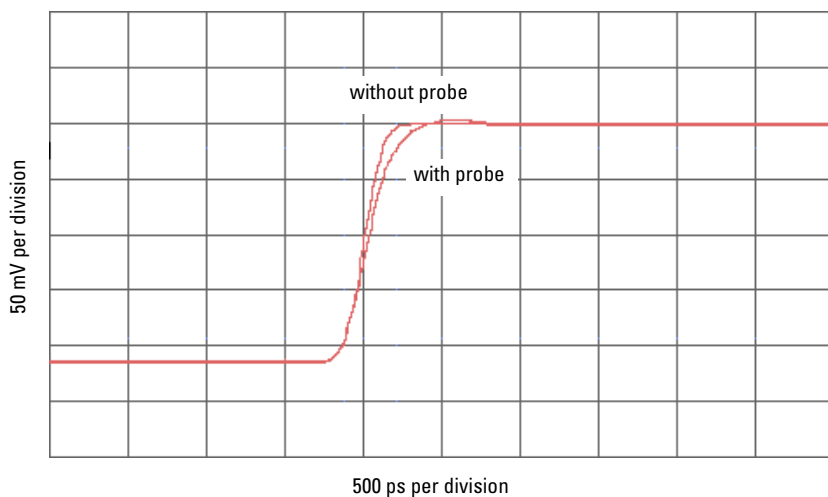
The recommended configurations are listed in order of loading on the target. As the following graphs demonstrate, the flying lead and ground extender configuration has the 3rd best loading of the four recommended configurations. However, because most of the capacitance of this configuration is undamped, the loading is more noticeable than the previous two configurations. The graphs show that the loading effects are negligible for targets with rise times ≥ 500 ps, probably still acceptable for targets with 250 ps rise times, and may be considered significant for 100 ps rise times. Ultimately, you must determine what is an acceptable amount of distortion of the target signal.

Operating the Probe

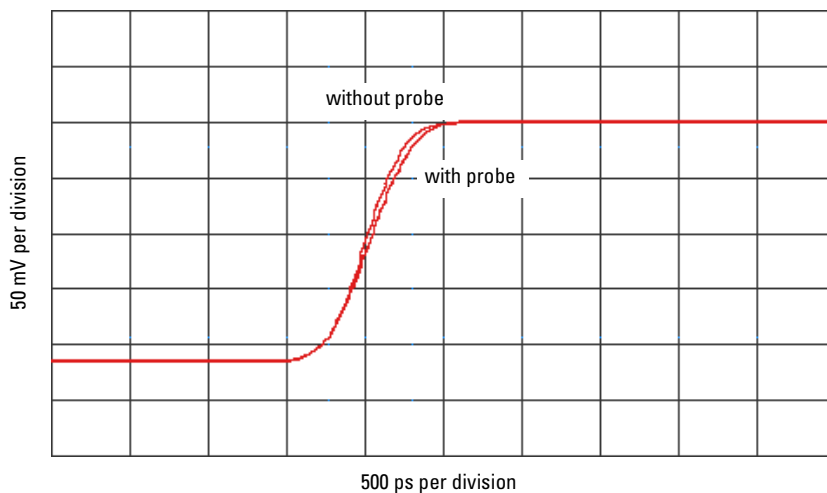
Flying Lead and Ground Extender



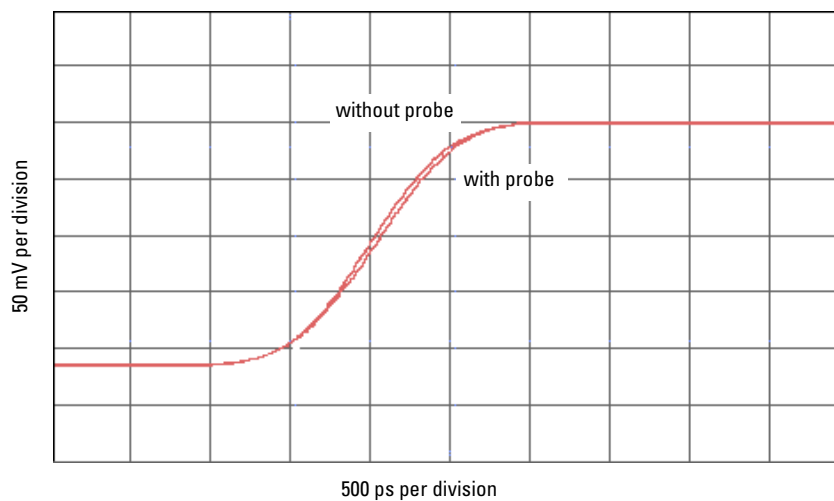
TDT measurement at receiver with and without probe load for 100 ps rise time



TDT measurement at receiver with and without probe load for 250 ps rise time



TDT measurement at receiver with and without probe load for 500 ps rise time



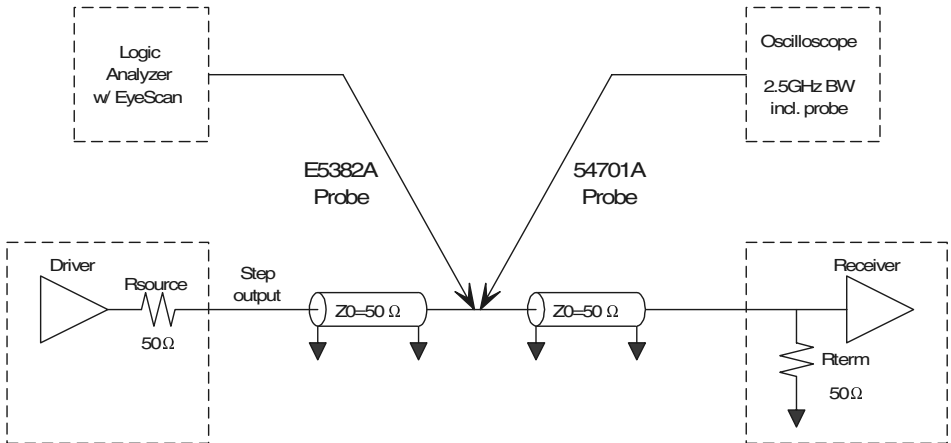
TDT measurement at receiver with and without probe load for 1 ns rise time

Operating the Probe

Flying Lead and Ground Extender

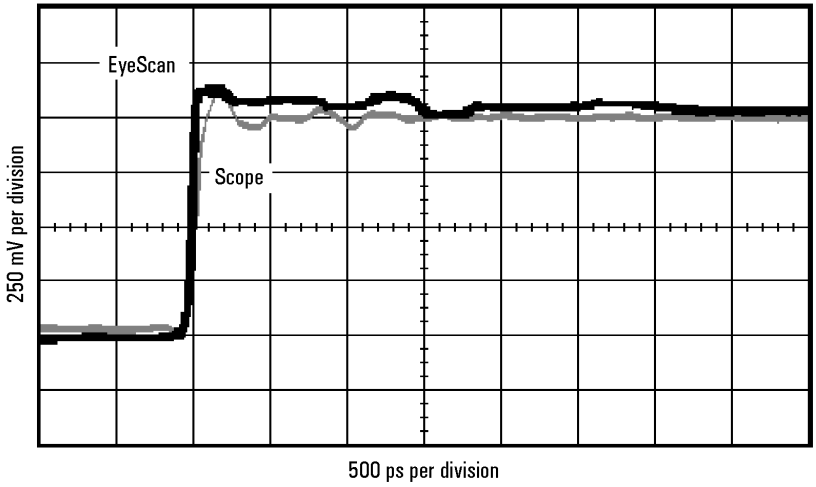
Step input

Maintaining signal fidelity to the logic analyzer is critical if the analyzer is to accurately capture data. One measure of a system's signal fidelity is to compare V_{in} to V_{out} for various step inputs. For the following graphs, V_{in} is the signal at the logic analyzer probe tip measured by double probing with an Agilent 54701A probe into an Agilent 54750A oscilloscope (total 2.5 GHz BW). Eye Scan is used to measure V_{out} , the signal seen by the logic analyzer. The measurements were made on a mid-bus connection to a $50\ \Omega$ transmission line load terminated at the receiver. These measurements show the logic analyzer's response while using the flying lead and ground extender configuration.

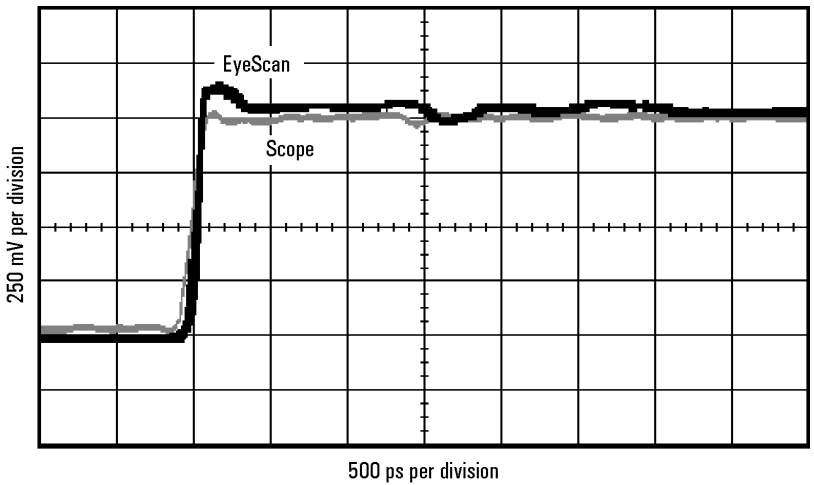


Step measurement schematic

The following graphs demonstrate the logic analyzer's probe response to different rise times. These graphs are included for you to gain insight into the expected performance of the different recommended accessory configurations.



Logic analyzer's response to a 100 ps rise time

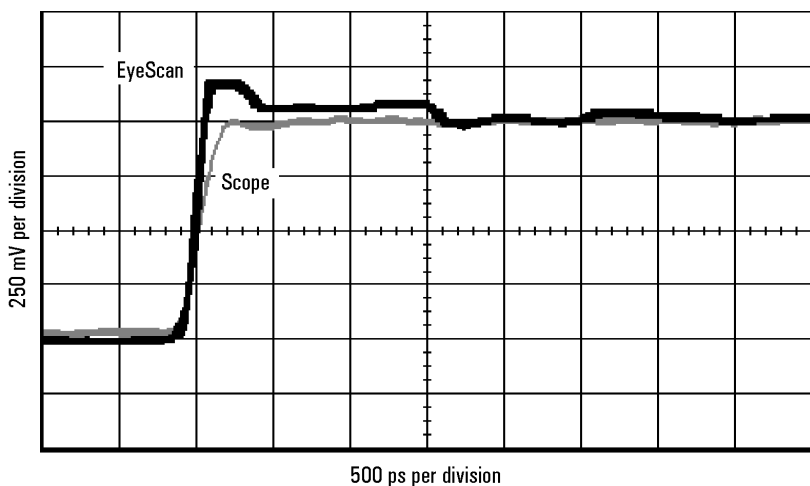


Logic analyzer's response to a 250 ps rise time

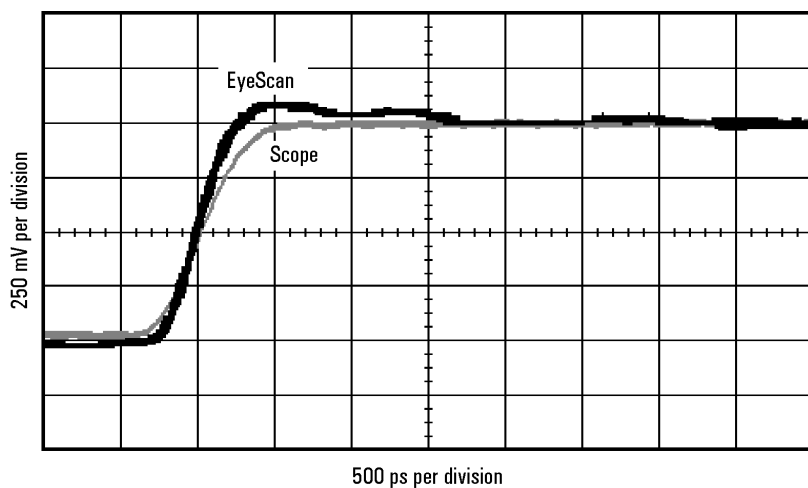
Note: These measurements are not the true step response of the probes. The true step response of a probe is the output of the probe while the input is a perfect step.

Operating the Probe

Flying Lead and Ground Extender



Logic analyzer's response to a 500 ps rise time

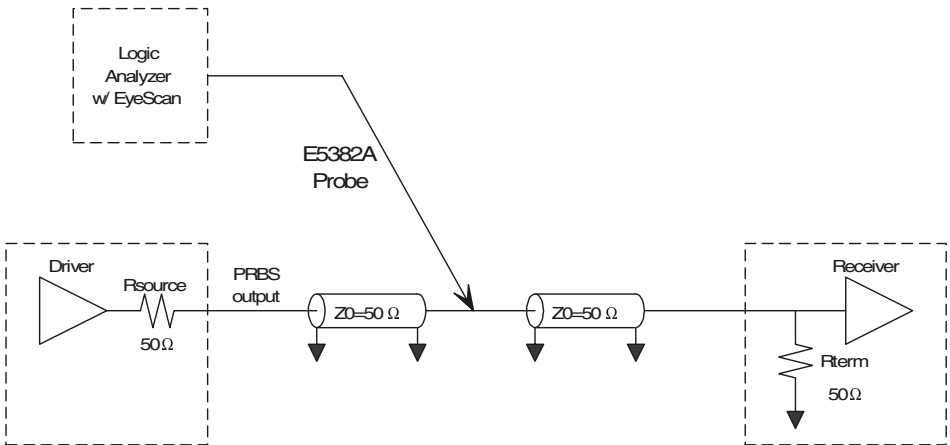


Logic analyzer's response to a 1 ns rise time

Note: These measurements are not the true step response of the probes. The true step response of a probe is the output of the probe while the input is a perfect step.

Eye opening

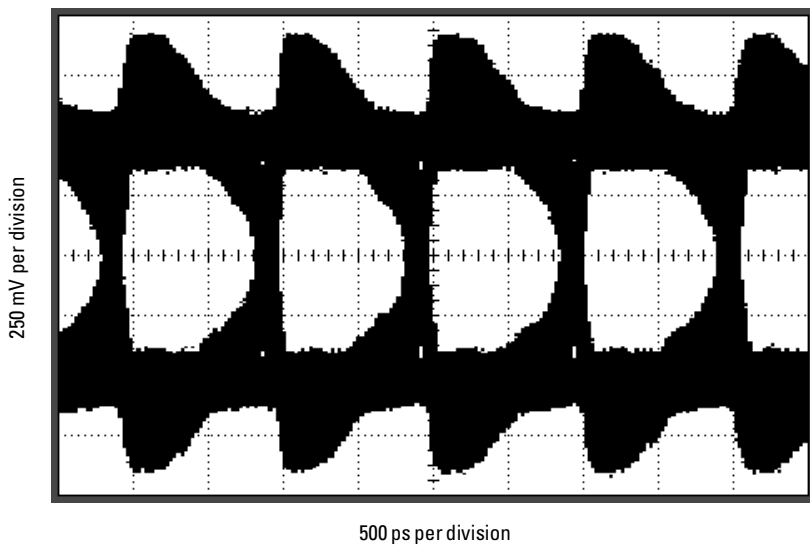
The eye opening at the logic analyzer is the truest measure of an analyzer's ability to accurately capture data. Seeing the eye opening at the logic analyzer is possible with Eye Scan. Eye opening helps you know how much margin the logic analyzer has, where to sample and at what threshold. Any probe response that exhibits overshoot and ringing, probe non-flatness, noise and other issues all deteriorate the eye opening seen by the logic analyzer. The following eye diagrams were measured using Eye Scan probed mid-bus on a $50\ \Omega$ transmission line load terminated at the receiver. The data patterns were generated using a $2^{23}-1$ pseudo random bit sequence (PRBS). These measurements show the remaining eye opening at the logic analyzer while using the flying lead and ground extender configuration.



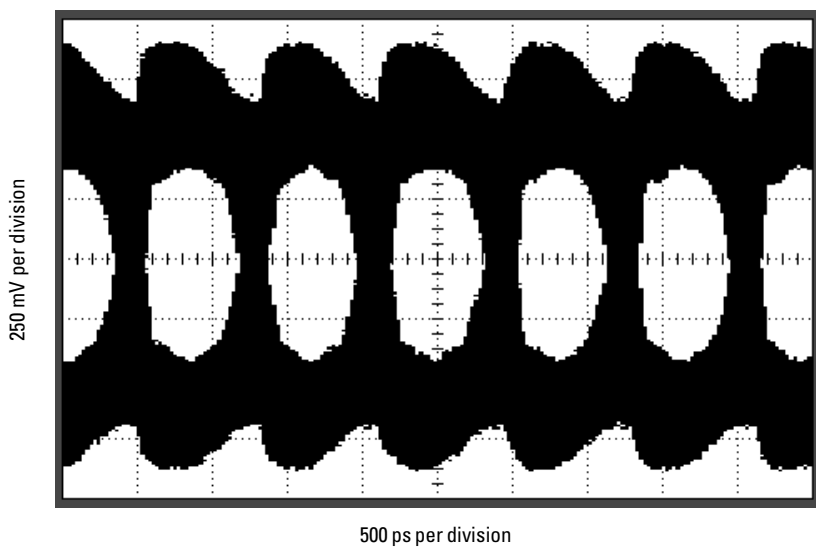
Eye opening measurement schematic

The logic analyzer Eye Scan measurement uses the same circuitry as the synchronous state mode analysis. Therefore, the eye openings measured are exact representations of what the logic analyzer sees and operates on in state mode. The following measurements demonstrate how the eye opening starts to collapse as the clock rate is increased. The peaking observed with this configuration on the preceding step-response graphs helps to preserve the eye opening out to 1.5 Gb/s. At 1500 Mb/s the eye opening is still as large as could be hoped for. As demonstrated by the last eye diagram, the flying lead and ground extender configuration still has no noticeable deterioration at 1500 Mb/s and minimum signal swing.

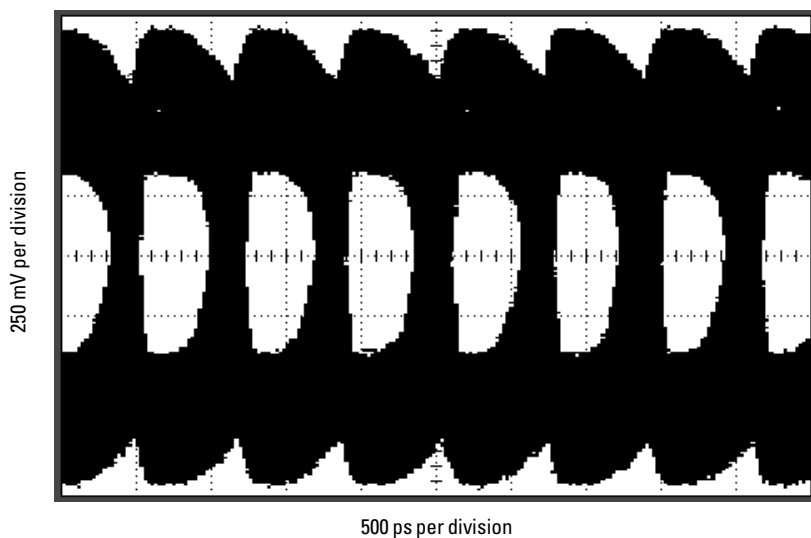
Operating the Probe
Flying Lead and Ground Extender



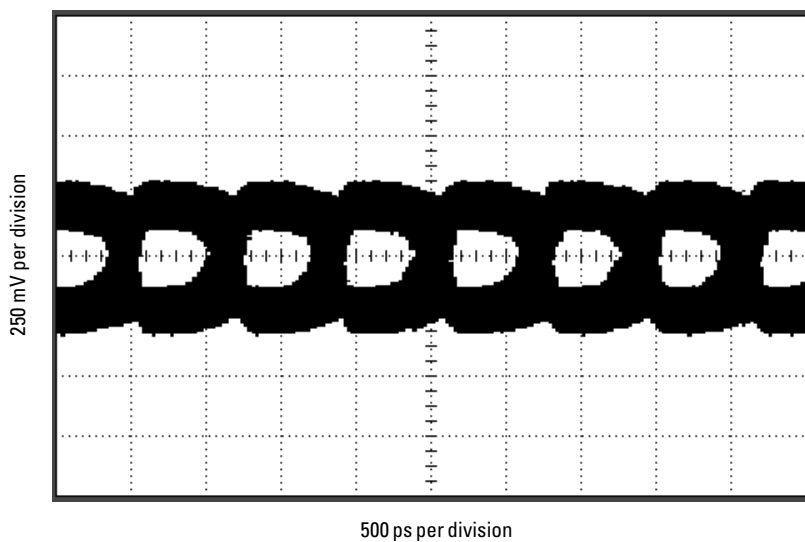
Logic analyzer eye opening for a PRBS signal of 1 V p-p, 1000 Mb/s data rate



Logic analyzer eye opening for a PRBS signal of 1 V p-p, 1250 Mb/s data rate



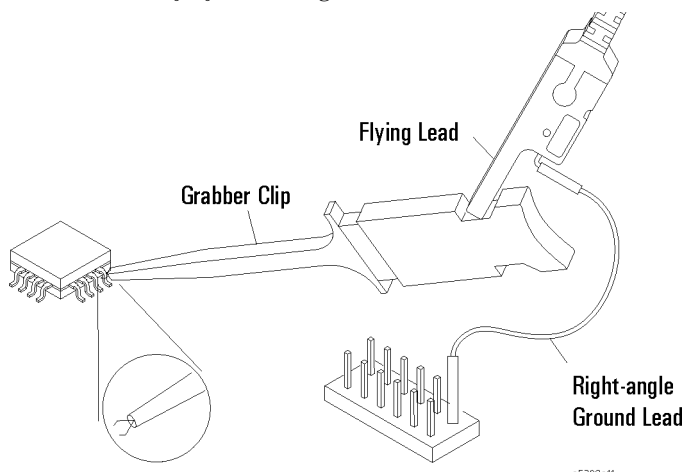
Logic analyzer eye opening for a PRBS signal of 1 V p-p, 1500 Mb/s data rate



Logic analyzer eye opening for a PRBS signal of 250 mV p-p, 1500 Mb/s data rate

Grabber Clip and Right-angle Ground Lead

Using the grabber clip for the signal and the right-angle for the ground gives you the greatest flexibility for attaching the probe to component leads, however as you can see from the following information, the signal quality is compromised the most severely by this configuration.



Grabber configuration

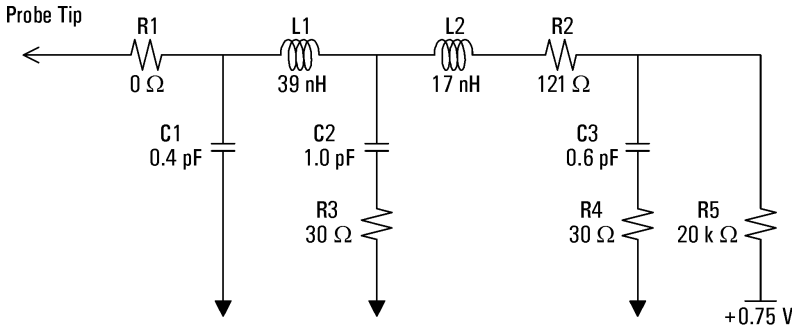
This configuration is provided as a convenient method of attaching to systems with slower rise times. The response of the probe is severely over-peaked. The load on the target is also the most severe of the 4 recommended configurations. As will be demonstrated in the following sets of measurements, the grabber clip and right angle ground lead configuration is only for systems with rise times slower than 1ns or effective clock rates less than 600Mb/s.

Note

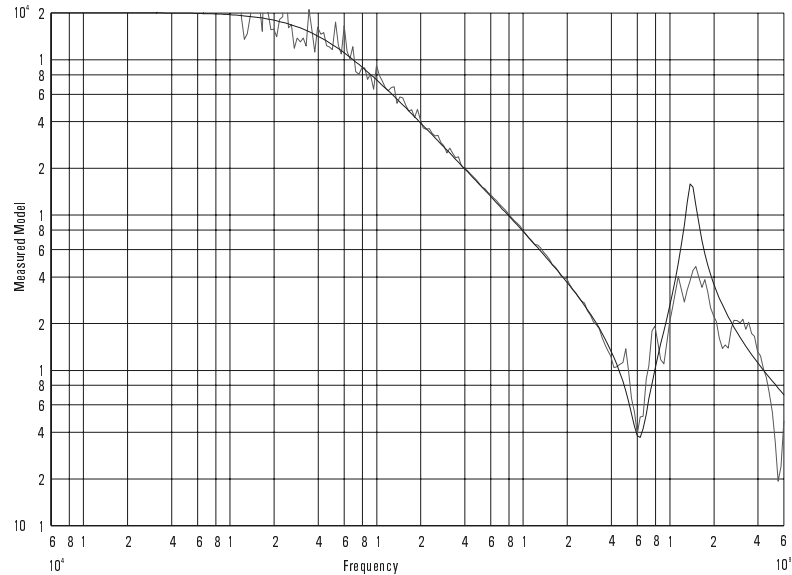
It is critical to maintain good probing techniques on the clock signal. If the clock being probed has <1 ns rise times, use an alternative configuration for probing.

Input Impedance

The E5382A probes have an input impedance which varies with frequency, and depends on which accessories are being used. The following schematic shows the circuit model for the input impedance of the probe when using the SMD IC grabber and the right-angle ground lead. This model is a simplified equivalent load of the measured input impedance seen by the target.



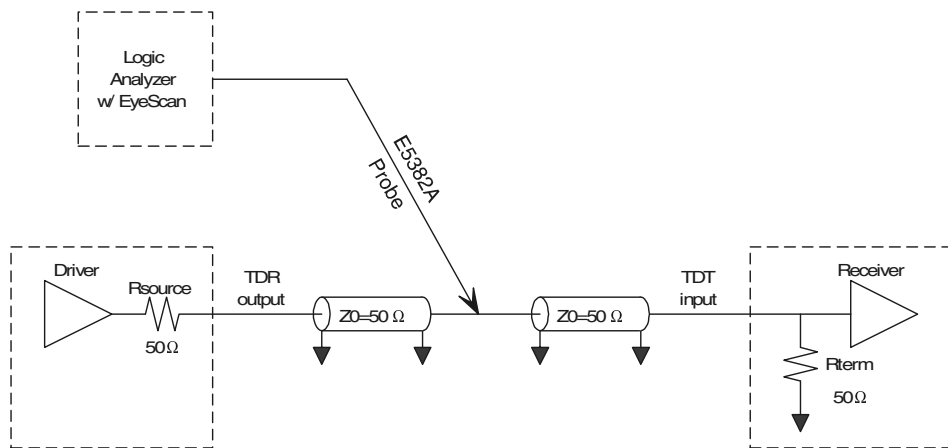
Equivalent load model



Measured versus modeled input impedance

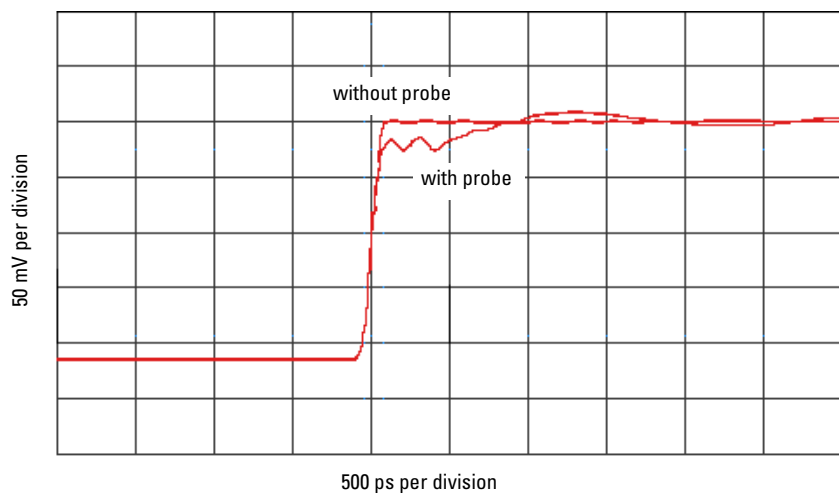
Time domain transmission (TDT)

All probes have a loading effect on the circuit when they come in contact with the circuit. Time domain transmission (TDT) measurements are useful for understanding the probe loading effects as seen at the target receiver. The following TDT measurements were made mid-bus on a $50\ \Omega$ transmission line load terminated at the receiver. These measurements show how the grabber clip and right-angle ground lead configuration affect the step seen by the receiver for various rise times.

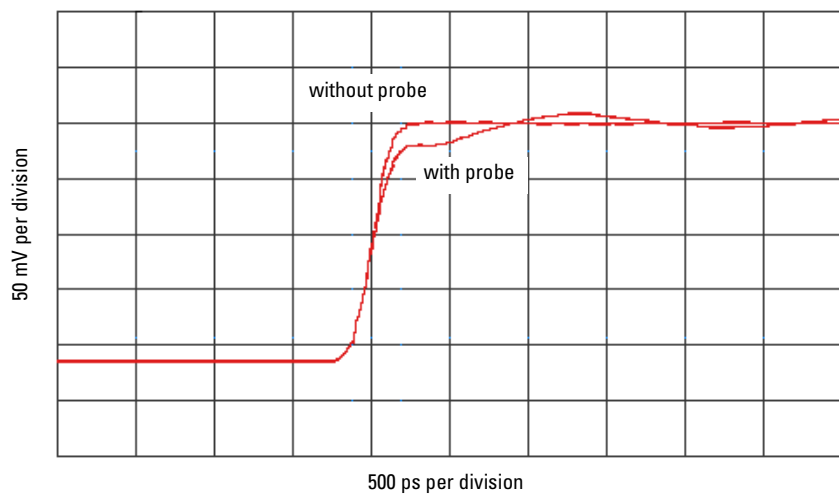


TDT measurement schematic

The recommended configurations are listed in order of loading on the target. As the following graphs demonstrate, the grabber clip and right angle ground lead configuration has the worst loading of the four recommended configurations. The grabber clip is a fairly long length of undamped wire, which presents a much more significant load on the target than the previous three configurations. The graphs show that the loading effects are noticeable even for targets with 1ns rise times. Ultimately, you must determine what is an acceptable amount of distortion of the target signal.



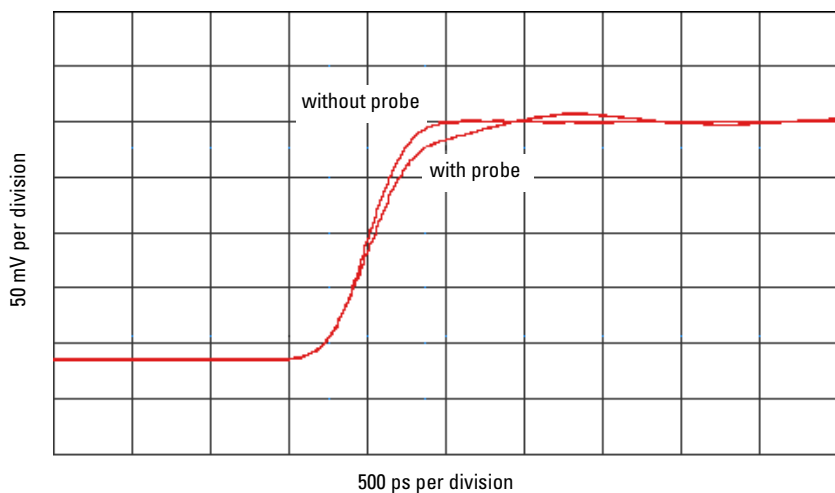
TDT measurement at receiver with and without probe load for 100 ps rise time



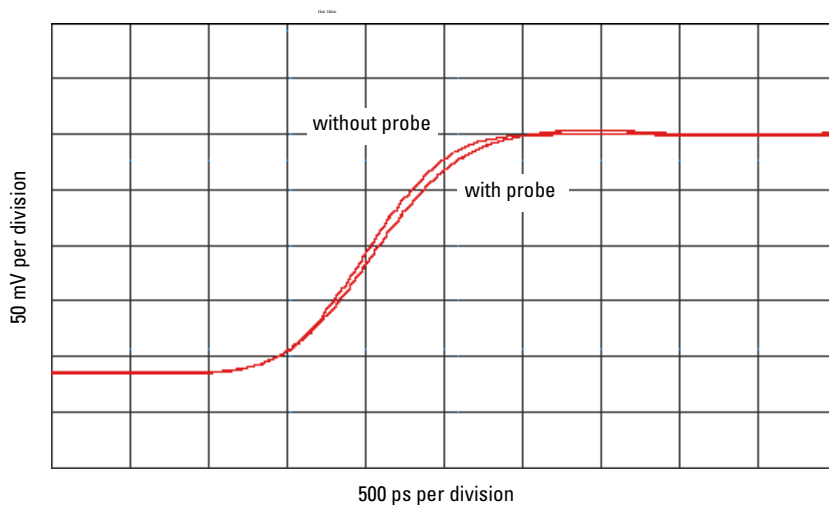
TDT measurement at receiver with and without probe load for 250 ps rise time

Operating the Probe

Grabber Clip and Right-angle Ground Lead



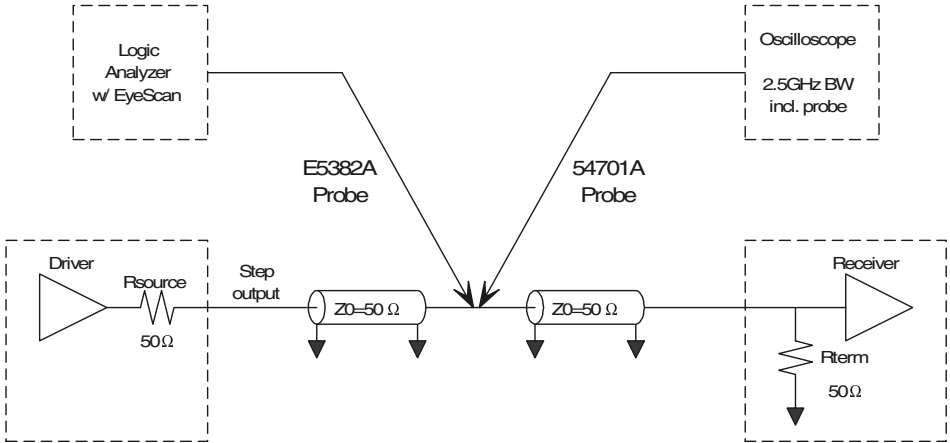
TDT measurement at receiver with and without probe load for 500 ps rise time



TDT measurement at receiver with and without probe load for 1 ns rise time

Step input

Maintaining signal fidelity to the logic analyzer is critical if the analyzer is to accurately capture data. One measure of a system's signal fidelity is to compare V_{in} to V_{out} for various step inputs. For the following graphs, V_{in} is the signal at the logic analyzer probe tip measured by double probing with an Agilent 54701A probe into an Agilent 54750A oscilloscope (total 2.5 GHz BW). Eye Scan is used to measure V_{out} , the signal seen by the logic analyzer. The measurements were made on a mid-bus connection to a $50\ \Omega$ transmission line load terminated at the receiver. These measurements show the logic analyzer's response while using the grabber clip and right-angle ground lead configuration.

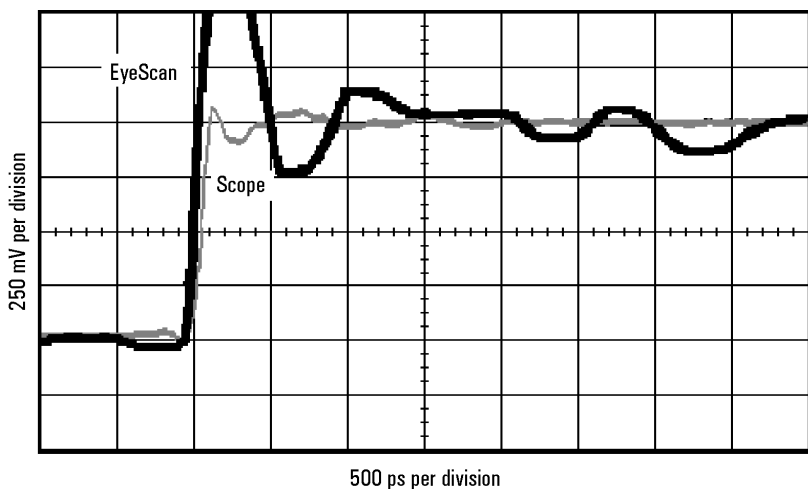


Step measurement schematic

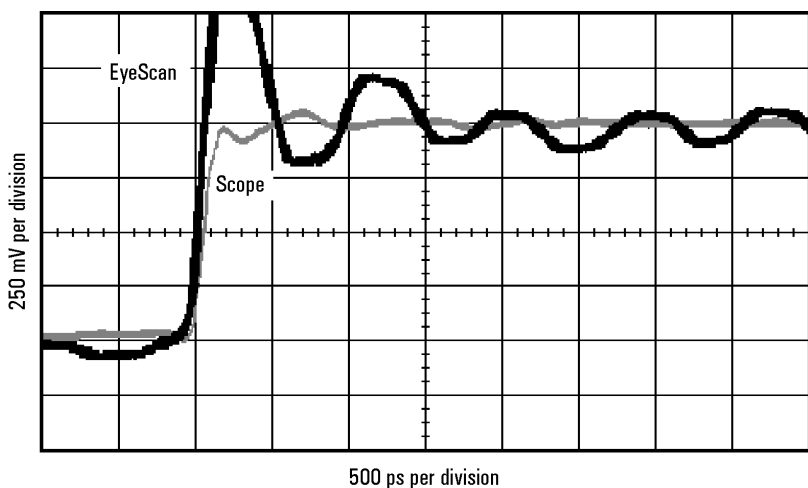
The following graphs demonstrate the logic analyzer's probe response to different rise times. These graphs are included for you to gain insight into the expected performance of the different recommended accessory configurations, particularly for the grabber clip and right-angle ground lead configuration. As the following graphs will demonstrate, the use of the undamped grabber clip results in excessive overshoot and ringing at the logic analyzer for targets with $< 1\text{ ns}$ rise times.

Operating the Probe

Grabber Clip and Right-angle Ground Lead

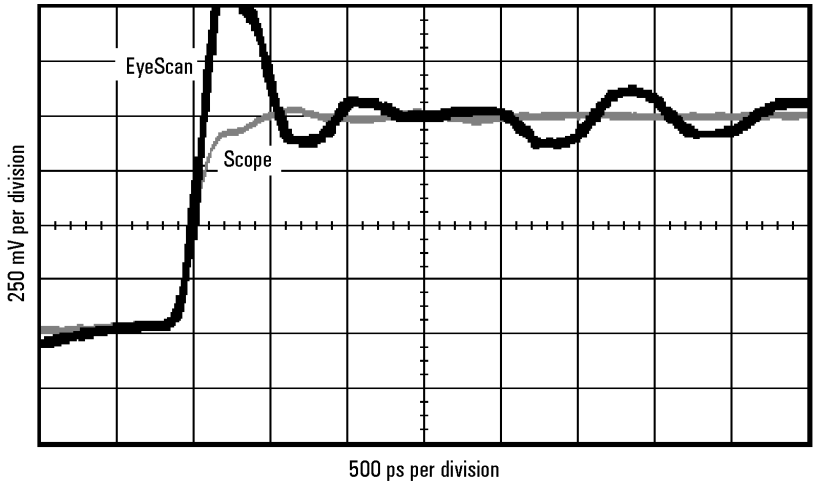


Logic analyzer's response to a 100 ps rise time

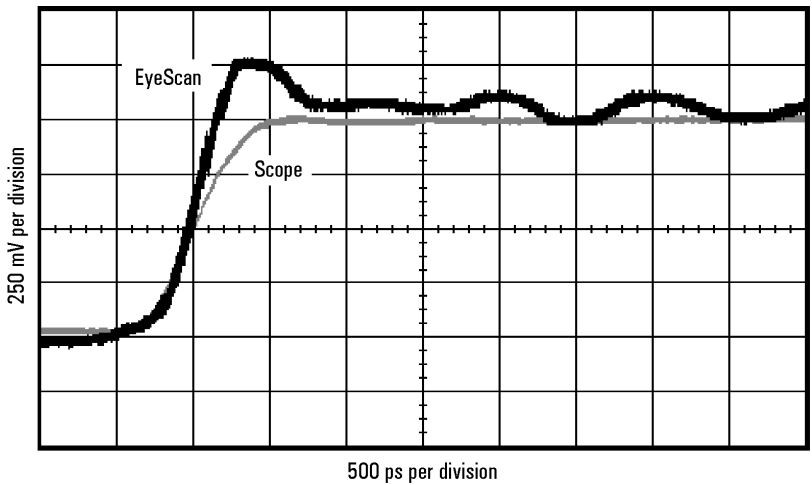


Logic analyzer's response to a 250 ps rise time

Note: These measurements are not the true step response of the probes. The true step response of a probe is the output of the probe while the input is a perfect step.



Logic analyzer's response to a 500 ps rise time



Logic analyzer's response to a 1 ns rise time

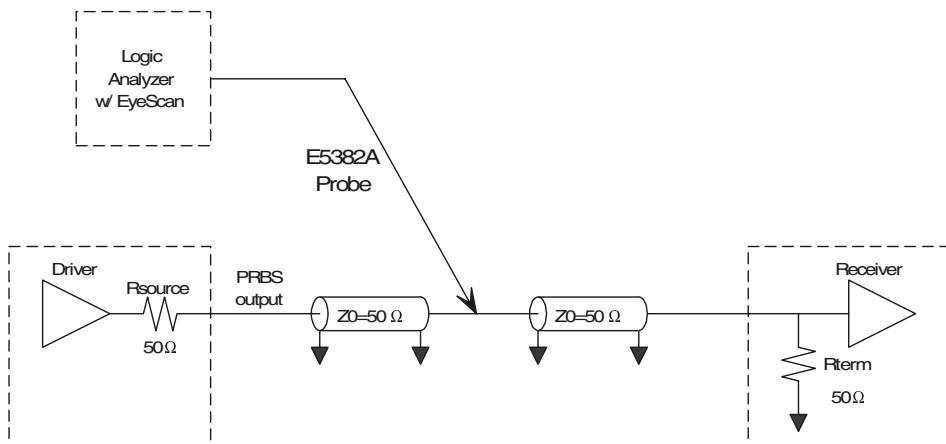
Note: These measurements are not the true step response of the probes. The true step response of a probe is the output of the probe while the input is a perfect step.

Operating the Probe

Grabber Clip and Right-angle Ground Lead

Eye opening

The eye opening at the logic analyzer is the truest measure of an analyzer's ability to accurately capture data. Seeing the eye opening at the logic analyzer is possible with Eye Scan. Eye opening helps you know how much margin the logic analyzer has, where to sample and at what threshold. Any probe response that exhibits overshoot and ringing, probe non-flatness, noise and other issues all deteriorate the eye opening seen by the logic analyzer. The following eye diagrams were measured using Eye Scan probed mid-bus on a $50\ \Omega$ transmission line load terminated at the receiver. The data patterns were generated using a $2^{23}-1$ pseudo random bit sequence (PRBS). These measurements show the remaining eye opening at the logic analyzer while using the grabber clip and right-angle ground lead configuration.

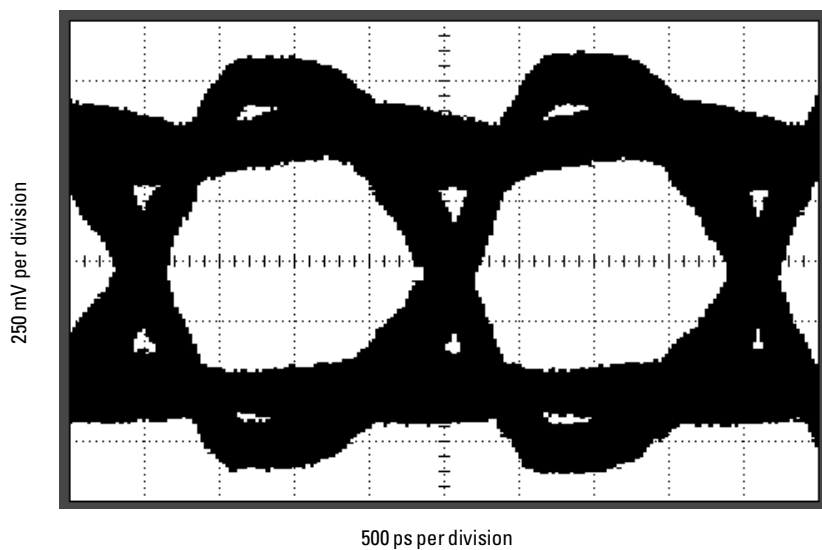


Eye opening measurement schematic

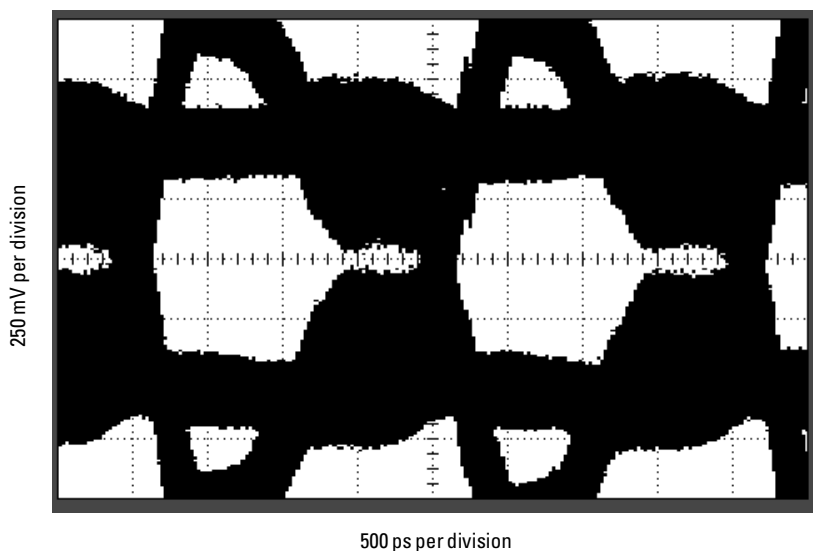
The logic analyzer Eye Scan measurement uses the same circuitry as the synchronous state mode analysis. Therefore, the eye openings measured are exact representations of what the logic analyzer sees and operates on in state mode. The following measurements demonstrate how the eye opening starts to collapse as the clock rate is increased. The severe overshoot and ringing observed with this configuration on the preceding step-response graphs deteriorates the eye opening for faster rise times. At 500 ps rise times the eye opening shows excessive ring-back and collapsing of the eye. Therefore, it is recommended that this configuration not be used for rise times faster than 1 ns or clock rates in excess of 600 Mb/s. The analyzer may still function at faster speeds, but will not meet state speed and setup/hold specifications.

NOTE

It is critical to maintain good probing techniques on the clock signal. If the clock being probed has $< 1\text{ ns}$ rise times, use an alternative configuration for probing.

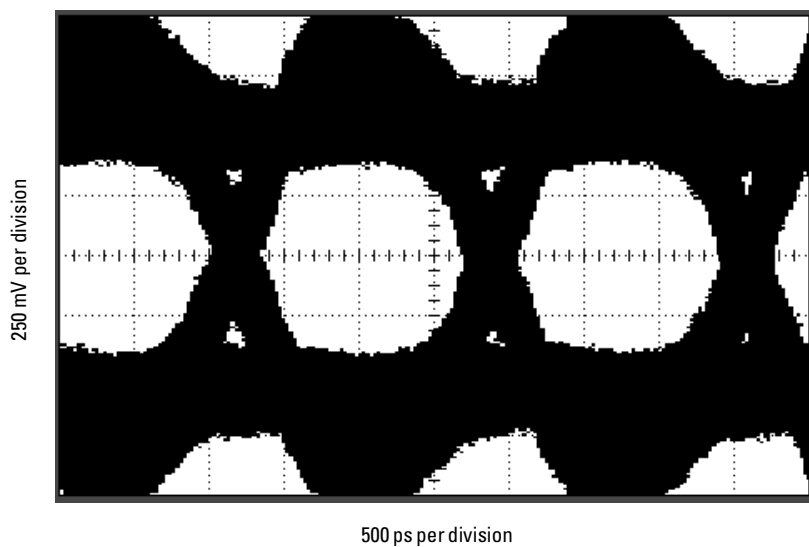


Logic analyzer eye opening for a PRBS signal of 1 V p-p, 500 Mb/s data rate

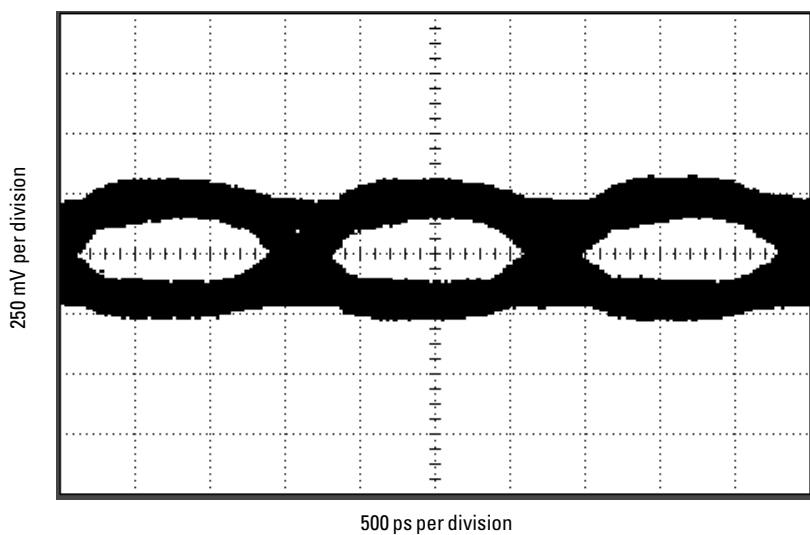


Logic analyzer eye opening for a PRBS signal of 1 V p-p, 500 Mb/s data rate

Operating the Probe
Grabber Clip and Right-angle Ground Lead



Logic analyzer eye opening for a PRBS signal of 1 V p-p, 600 Mb/s data rate



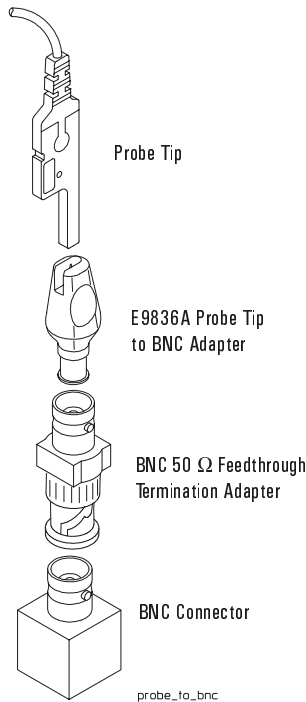
Logic analyzer eye opening for a PRBS signal of 250 mV, 600 Mb/s data rate

Connecting to coaxial connectors

You can use the Agilent E9638A to adapt the probe tip to a BNC connector. The adapter and the BNC connector itself will add significant capacitance to the probe load. You can generally assume (though not always) that a BNC connector is intended to form a part of a transmission line terminated in $50\ \Omega$ (the characteristic impedance of BNC connectors is $50\ \Omega$). So, the best solution for maintaining signal integrity is to terminate the line in $50\ \Omega$ after the BNC connector and as close as possible to the probe tip. That technique minimizes the length of the unterminated stub past the termination. The following picture shows the recommended configuration to achieve this.

Note

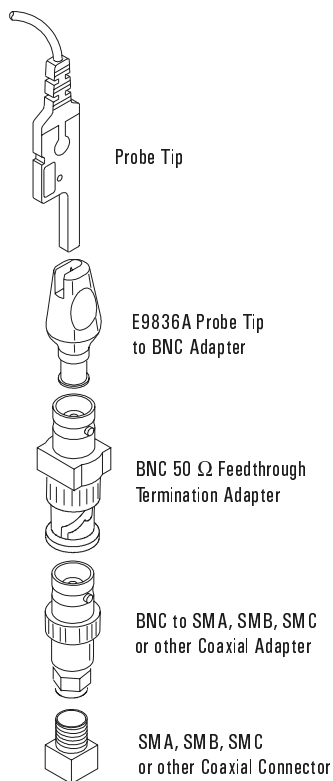
This configuration has not been characterized for target loading or logic analyzer performance. Therefore no recommendations are being made or implied as to the expected performance of this configuration.



BNC connector

Operating the Probe

Connecting to coaxial connectors



sma_smb_smc

SMA, SMB, SMC, or other coaxial connectors

Index

A

accessories
 additional 8
 supplied 8

B

Berg strip 39, 50
BNC adapter 8

C

channels 6
characteristics
 of probe 9, 10
 of suggested configurations 15
cleaning the instrument 65
clock 9
clock input 11
configuration
 130 ohm resistive signal pin & solder-down
 ground lead 16
 5 cm resistive signal pin & solder-down ground
 lead 27
 flying lead and ground extender 39
 grabber clip and right-angle ground lead 50
 hand-held probing 16
 pin probing 39
 surface-mount probing 27
configurations, suggested 15
connecting to logic analyzer 11

D

damage
 to the probe 7
 to the resistor 27
differential threshold 11
dimensions 10

E

environmental characteristics 10
eye opening 24, 36, 47, 58

F

flying lead 15, 39
flying lead and grabber clip 50
flying lead and signal pin 16

G

general characteristics 10
grabber clip 15, 50
ground
 extender 15, 39
 lead 16
 right angle 15, 50
 solder down 15, 16, 27

H

hand-held probing 16

I

IC probing 27
input impedance 17, 29, 40, 51
inspecting probe 7
instrument, cleaning the 65

O

operating environment 10
ordering accessories 8

P

part numbers for accessories 8
pin probing 39
probe
 case contents 7
 characteristics 9, 10
 inspection 7
 setup 11
probing
 Berg strip 39
 Berg strip and IC 50
 coaxial connectors 62
 grabber clip 50
 IC and pins 50
 IC and surface mount 50
 IC and test point 27
 pins 39
 SMA, SMB, SMC connectors 62
 surface-mount components 27
 test points 16

R

repair or replacement 7

- replaceable parts 8
- resistive signal
 - lead, 5 cm 15, 27
 - pin, 130 ohm 15, 16

S

- setting up the probe & logic analyzer 11
- SMA,SMB,SMC connectors 62
- solder-down ground 16, 27
- specifications 9
- state data rate 9
- step input 21, 33, 44, 55
- suggested configurations 15
- surface-mount probing 27

T

- TDT 18, 30, 41, 52
- test point 16, 27
- threshold
 - accuracy 9
 - differential 11
 - range 9
 - user defined 12

U

- user defined threshold 12

W

- weight 10

Safety Notices

This apparatus has been designed and tested in accordance with IEC Publication 1010, Safety Requirements for Measuring Apparatus, and has been supplied in a safe condition. This is a Safety Class I instrument (provided with terminal for protective earthing). Before applying power, verify that the correct safety precautions are taken (see the following warnings). In addition, note the external markings on the instrument that are described under "Safety Symbols."

Warnings

- Before turning on the instrument, you must connect the protective earth terminal of the instrument to the protective conductor of the (mains) power cord. The mains plug shall only be inserted in a socket outlet provided with a protective earth contact. You must not negate the protective action by using an extension cord (power cable) without a protective conductor (grounding). Grounding one conductor of a two-conductor outlet is not sufficient protection.
- Only fuses with the required rated current, voltage, and specified type (normal blow, time delay, etc.) should be used. Do not use repaired fuses or short-circuited fuseholders. To do so could cause a shock or fire hazard.

- If you energize this instrument by an auto transformer (for voltage reduction or mains isolation), the common terminal must be connected to the earth terminal of the power source.
- Whenever it is likely that the ground protection is impaired, you must make the instrument inoperative and secure it against any unintended operation.
- Service instructions are for trained service personnel. To avoid dangerous electric shock, do not perform any service unless qualified to do so. Do not attempt internal service or adjustment unless another person, capable of rendering first aid and resuscitation, is present.

- Do not install substitute parts or perform any unauthorized modification to the instrument.
- Capacitors inside the instrument may retain a charge even if the instrument is disconnected from its source of supply.
- Do not operate the instrument in the presence of flammable gasses or fumes. Operation of any electrical instrument in such an environment constitutes a definite safety hazard.
- Do not use the instrument in a manner not specified by the manufacturer.

To clean the instrument

If the instrument requires cleaning: (1) Remove power from the instrument. (2) Clean the external surfaces of the instrument with a soft

cloth dampened with a mixture of mild detergent and water. (3) Make sure that the instrument is completely dry before reconnecting it to a power source.

Safety Symbols



Instruction manual symbol: the product is marked with this symbol when it is necessary for you to refer to the instruction manual in order to protect against damage to the product.



Hazardous voltage symbol.



Earth terminal symbol: Used to indicate a circuit common connected to grounded chassis.

Notices

© Agilent Technologies, Inc. 2002

No part of this manual may be reproduced in any form or by any means (including electronic storage and retrieval or translation into a foreign language) without prior agreement and written consent from Agilent Technologies, Inc. as governed by United States and international copyright laws.

Manual Part Number

E5382-97000, April 2002

Print History

E5382-97000, April 2002

Agilent Technologies, Inc.
1900 Garden of the Gods Road
Colorado Springs, CO
80907 USA

Restricted Rights Legend

If software is for use in the performance of a U.S. Government prime contract or subcontract, Software is delivered and licensed as "Commercial computer software" as defined in DFAR 252.227-7014 (June 1995), or as a "commercial item" as defined in FAR 2.101(a) or as "Restricted computer software" as defined in FAR 52.227-19 (June 1987) or any equivalent agency regulation or contract clause. Use, duplication or disclosure of Software is subject to Agilent Technologies' standard commercial license terms, and non-DOD Departments and Agencies of the U.S. Government will receive no greater than Restricted Rights as defined in FAR 52.227-19(c)(1-2) (June 1987). U.S. Government users will receive no

greater than Limited Rights as defined in FAR 52.227-14 (June 1987) or DFAR 252.227-7015 (b)(2) (November 1995), as applicable in any technical data.

Document Warranty

The material contained in this document is provided "as is," and is subject to being changed, without notice, in future editions. Further, to the maximum extent permitted by applicable law, Agilent disclaims all warranties, either express or implied, with regard to this manual and any information contained herein, including but not limited to the implied warranties of merchantability and fitness for a particular purpose. Agilent shall not be liable for errors or for incidental or consequential damages in connection with the furnishing, use, or performance of this document or of any information contained herein. Should Agilent and the user have a separate written agreement with warranty terms covering the material in this document that conflict with these terms, the warranty terms in the separate agreement shall control.

Technology Licenses

The hardware and/or software described in this document are furnished under a license and may be used or copied only in

accordance with the terms of such license.

WARNING

A WARNING notice denotes a hazard. It calls attention to an operating procedure, practice, or the like that, if not correctly performed or adhered to, could result in personal injury or death. Do not proceed beyond a WARNING notice until the indicated conditions are fully understood and met.

CAUTION

A CAUTION notice denotes a hazard. It calls attention to an operating procedure, practice, or the like that, if not correctly performed or adhered to, could result in damage to the product or loss of important data. Do not proceed beyond a CAUTION notice until the indicated conditions are fully understood and met.

**Trademark
Acknowledgements**



Agilent Technologies

Agilent Technologies
Printed in the USA
Manual Part Number
E5382-97000

